



SEPT. 13TH & 14TH, 2019

CULPEPER, VA

FRIDAY, 7PM

SATURDAY, 11AM

**THIS IS YOUR CATALOG.
PLEASE BRING IT WITH YOU TO THE SALE!**

THE —LONGHORN— LEGACY GROUP EST. 2019

TEXAS LONGHORN LEGACY —S A L E—

NEW FOR 2020 - THE LEGACY HEIFER SALE FUTURITY. THE HEIFERS CONSIGNED TO THE HEIFER SALE ARE IN THEIR OWN FUTURITY AND CALCUTTA. IT'LL PAY OUT LIKE A REGULAR FUTURITY BUT THERE IS ALSO A \$5,000 PURSE TO BE SPLIT BETWEEN THE BUYER AND SELLER OF THE WINNING HEIFER. WE'RE ALSO OFFERING FREE CONSIGNMENTS AND 0% COMMISSION FOR OUR TOP TIER SPONSORS. SOMETHING THAT'S NEVER BEEN DONE BEFORE IN A SALE OF THIS SIZE.

OUR MISSION

"THE TEXAS LONGHORN LEGACY GROUP, LLC (LLG) VALUES THE HISTORY AND PROUD TRADITIONS OF TEXAS LONGHORN CATTLE AND OF THOSE WHOSE WISDOM AND LEADERSHIP OVER THE YEARS HAVE BENEFITTED THE BREED. TOWARD THAT END, LLG HOSTS PROMOTIONAL EVENTS INCLUDING THE LEGACY AND CHERRY BLOSSOM SALES, BREED RELATED PHILANTHROPIC CAUSES INCLUDING THE LONGHORN LEGACY GRANT PROGRAM, AND OTHER INNOVATIVE PLATFORMS WHICH SUPPORT THE BREED AND THOSE WHO SERVE IT."



CHASE VASUT AT 512-917-8654 OR AT CHASEVASUT@YAHOO.COM

BEAR DAVIDSON AT 540-687-0050 OR AT BEARDAVIDSON@YMAIL.COM

Welcome

Fellow Longhorn Lovers,

We would like to welcome you to the 2nd Annual East Coast Longhorn Classic. Last year was a great success with great attendance, ZERO POs and over a \$5000 average in both the heifer and cow sales while promoting the strength of the East Coast Market. Our main goal with the ECLC is for it to develop into a showcase that allows breeders on the East Coast the chance to build their herd on Industry leading cattle and genetics while promoting their programs and saving the exorbitant cost of travel West to other sales. This year consignors stepped up in a big way, you will see one of the strongest sets of cattle that you'll find anywhere in the country. The vibe has been great the last few years on the East Coast, between all the kids running around, the fun everyone has, and the quality of cattle, it's hard to beat. As humble as we are, we think this is one of the most enjoyable events of the year. We say this because people like Angie Wulf, Lisa Luebbering, and Dale Metz, who came out for their first event in the spring, had no problem sharing their feelings on Facebook. So if you haven't been here yet, come on out!

This year we have continued special touches such the yellow highlighted over 80" animals and the 0% Commission for our Patron Sponsors as well as developed new ways to increase the fun like the BC Ranch Rule, check that explanation out with its logo. New this year you will find the Weaning Pen that will cater to our kids with safe and fun place to hang out throughout the weekend! We have a special surprise for the kids attending that we'll announce during the sale. Also, if you're reading this, we have a special surprise customized Yeti Rambler for the first person who takes a picture of themselves in a yellow shirt and cowboy hat while holding the East Coast Longhorn Classic sale catalog and posts it on Facebook tagging Ann, Bear, and Chase.

We can't thank everyone who supported this event thus far. If you look through this catalog, you'll see some amazing cattle. We asked these consignors to dig deep, when they showed us a pending consignment we told them "I think you got better, we want to showcase your cattle" and they dug deeper. Like we continue to say this sale belongs to all those wanting to grow the East Coast market. Its success derives from the industry's participation. Look at the amount of ads run and look at the small sale size. Why's that matter? People didn't want to overrun the sale with their culls. They wanted to put in their best. And that consists of their top few head. Not a dozen.

Of course, we can't forget our sponsors as there are over 20 OF YOU! The East Coast Longhorn Classic took the idea of a sponsor is very seriously. For many events this is just a donation, we wanted the sponsorships to work for you and built each level with special perks, such as 0% sales commission. We also wanted to thank Brent & Cindy Bolen and John & Tami Yake of Yake Travel who had no consignments but still wanted to support this event. We are thrilled to see all of at the 2019 East Coast Longhorn Classic. Thank you for your support and aide in strengthening not only the East Coast Market, but the Industry as a whole.

Sincerely,

Ann Gravett, Chase Vasut & Bear Davidson



Schedule of Events

THURSDAY, SEPTEMBER 12TH, 2019

- 8am-5pm- Futurity Cattle and Sale Cattle Arrive

*Please make special arrangements if you cannot work within this time frame.

** Futurity cattle are not provided hay or water, Sale cattle will be provided hay and water

FRIDAY, SEPTEMBER 13TH, 2019

- 8am-3pm- Sale Cattle Arrive
- 12 noon- East Coast Longhorn Classic & Calcutta
- 5pm- Virginia Piedmont Dinner held at the Sale Barn sponsored by the East Coast Longhorn Classic
- 7pm- Futurity awards followed by the East Coast Longhorn Classic Showcase Heifer Sale

SATURDAY, SEPTEMBER 14TH, 2019

- 11am- East Coast Longhorn Classic

Transits are \$10/head and must be scheduled no later than Tuesday. Any cattle that show up unannounced will be charged \$100/head.

Please contact Shawn Pequignot 717-577-3347 to schedule.

Hotel Locations

Culpepper, VA

Ask for the Longhorn Sale rate

Quality Inn- 540-825-4900

Red Roof Inn- 540-825-8088

Warrenton, VA

Roughly 25 mins from sale barn

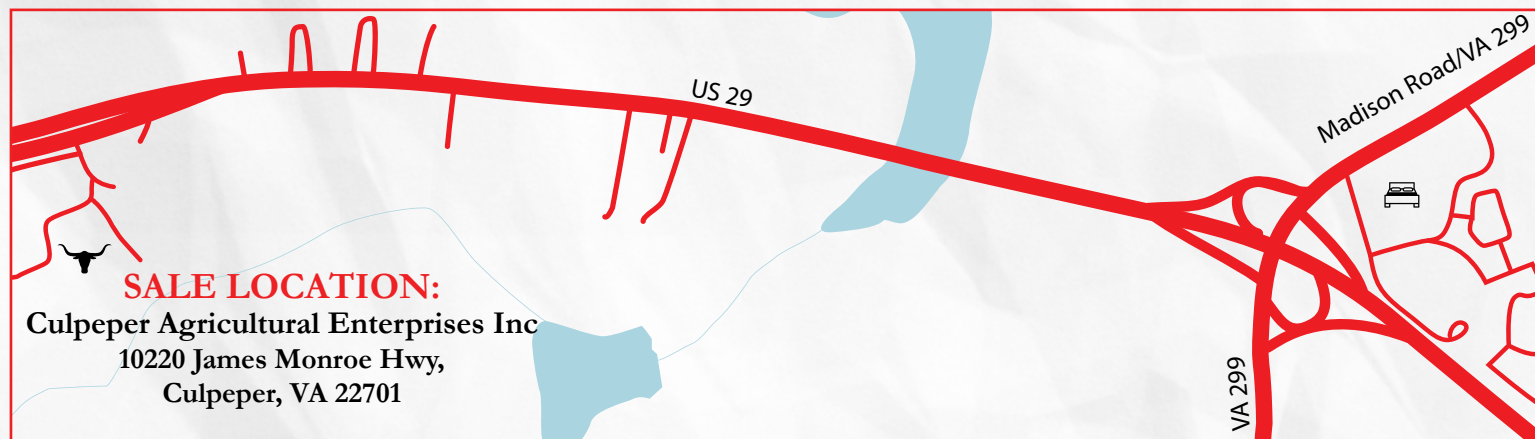
Holiday Inn- 540-341-3461

Hampton Inn-540-349-4200

Ruckersville, VA

Roughly 25 mins from sale barn

Holiday Inn- 434-985-1855



Sale Day Staff

HOSTS

Ann Gravett

Chase Vasut, 512.917.8654

Bear Davidson, 540.687.0050

SALE COORDINATORS

Bear Davidson

Chase Vasut

OFFICE STAFF

Seasons Pequignot

AUCTIONEER

Dan Huntington

VA License #2907004502

COMMENTARY

Chase Vasut

RINGMEN

Jay Wachter

Bear Davidson

ONLINE BIDDING

Hired Hand Live

www.HiredHandLive.com

Molly Clubb, 319.269.8903

Jaymie Feldmann, 319.239.2662

Sponsors

Brent & Cindy Bolen
Bolen Longhorn Ranch

Dan & Kristi Grove
Grove Cattle Co

Andy & Colby Mast
Mast Longhorns

Ryan & Brandy Schmidt
Rocky Meadow Longhorns

Chris & Christina Clark
Circle Double C Ranch

John King
J&J Longhorns

Ricky McLeod
Home Branch Ranch

Jared Sink
Sink Longhorns

Craft/Gravett Partnership
Les & Lane Craft
& Ann Gravett

Terry King
TK Longhorns

Dale Metz & Decarlo Noble
FHR Longhorns

Jim Steffler
Shamrock Valley Longhorns

Nancy Dunn & Kathy Kittler
The Cow Gals

Jerry Loveday
E&L Texas Longhorns

Shawn & Seasons Pequignot
Crazy Cattle Co

Chase Vasut
Rockin' AF Longhorns

Ann Gravett
G&G Longhorns

Dick Lowe
Triple R Longhorns

John & Christy Randolph
Lonesome Pines Longhorns

John & Tami Yake
Yake Farms & Yake Travel

Why the yellow highlights?

We wanted to be different and create a new feature to your standard sale catalog. Each of the yellow highlighted animals are over 80" TTT. Thanks to Hired Hand, we were able to track down many of these measurements. Although we're well aware that there are many great cows under 80" TTT, we wanted to give some extra promotion to the consignments who pulled from the heart of their herds. Thank you to each and every consignor!

ON-LINE BIDDING INFORMATION:

Internet Viewing & Bidding Courtesy of Hired Hand Live, a Product of Hired Hand Software www.HiredHandLive.com

Go to www.HiredHandLive.com and follow the prompts to either log in (if you've used our system before) or become a registered bidder.

We recommend using the internet browsers Chrome or Firefox, not Safari.

Bidders are required to register for each sale they wish to participate in. Viewers are not.

A Credit Card is required for online verification but will not be billed. Upon notification that you've placed a winning bid on an animal, the sale will invoice you with mailing instructions for payment by check, wire transfer or money order.

You can place absentee and max bids if you are unable to be online live during the sale. These bids are NOT seen by anyone other than Hired Hand staff and are placed automatically by our system to purchase the animal at the lowest price possible for you.

To also join Hired Hand's Mobile Marketing List and receive text updates of sale prices and buyers please text

"website.longhorns" to the number "77948."

There is no fee to participate and no buyer's premium. Internet buyers are responsible for coordinating their own hauling.

All terms and conditions listed in the sale catalog apply to on-line bidding.

Contact Molly Clubb, Hired Hand, for additional assistance: 319-269-8903 or molly@hiredhandsoftware.com.

Consignors

5D Ranch
Dan and Denise Huntington
Gresham, WI
www.5DRanch.org
Lot #H18

Albanese/Wachter Partnership
Mke & Ellen Albanese/
Jay & Suzi Wachter
Lot #15

Bilgrien Cattle Company
Dave Bilgrien
Cambridge, WI
Lot #3, 18

Case Cattle Company
Adam and Julia Case
Wendell, NC
www.caselonghorns.com
Lot #H7

Cedar Rock Ranch
Joel and Rebecca Miner
Orrstown, PA
www.cedarrockranchpa.com
Lot #19

Church View Cattle Company
Mike & Shirley Thiel
Black Creek, WI
www.churchviewcattle.com
Lot #13

Circle Double C Ranch
Chris and Christina Clark
Taft, TX
www.circledoublecranch.com
Lot #14, 37

Craft/Gravett Partnership
Les & Lane Craft & Ann Gravett
Lot #20

Crazy Cattle Company
Shawn and Seasons Pequignot
Wellsville, PA
www.CrazyCattleCompany.com
Lot #5

Double A Longhorns
Aaron Adkins
Rutherfordton, NC
www.carolinacartellonghorns.com
Lot #H11

D-R Henry Ranch
David and Retta Henry
Hedgesville, WV
www.drhenryranch.com
Lot #H5

E&L Texas Longhorn Farms
Jerry Loveday
Dandridge, TN
www.EandLTexasLonghornFarms.com
Lot #35

Evergreen Haven Farms
Dustin & Jerri Martin
Chambersburg, PA
Lot #6

FHR Longhorns
Dale Metz & Decarlo Noble
Denton, TX
www.fhrlonghorns.com
Lot #11, 40

Flying H Cattle Company
Todd Hensley
Telford, TN
Lot #27

G&G Longhorns
Ann Gravett
Rochelle, VA
www.GandGTexasLonghorns.com
Lot #1

G&G Longhorns/Rockin H Longhorns
Partnership
Ann Gravett/Dale Hunt
Lot #H19

Grove Cattle Company
Dan and Kristi Grove, and Leah Grove
Bailey, NC
www.GroveCattle.com
Lot #H15

Hatcreek
Arlan and Elizabeth Bush
Shelby, NC
Lot #H8a, H8b, 32

Hershberger Cattle
Gary Lee Hershberger
Dundee, OH
Lot #H12

Home Branch Ranch
Ricky McLeod
Manning, SC
www.HomeBranchRanch.com
Lot #H3, 33, 41

J&J Longhorns
John King
Port Royal, PA
www.dukesranch.com/JJs-longhorns-
Ranch
Lot #17

Khaos Cattle Company
Ken & Jessica Morris
Monroe, NC
www.carolinacartellonghorns.com
Lot #7, 34

Lazy J Longhorns
Joe Sedlacek
Greenleaf, KS
www.lazyjlonghorns.com
Lot #H1

Leonard Ranch
Tyson Leonard
Galax, VA
www.leonardlonghornfarms.com
Lot #H14, 21

Lonesome Pines Ranch
John & Christy Randolph
Smithville, TX
www.lonesomepinesranch.com
Lot #H17, 23

Longhorn Creek Ranch
Brian Varner
Topeka, KS
www.longhorncreek.com
Lot #H4

Mast Longhorns
Andy & Colby Mast
Grand Rapids, MI
www.michiganmafialonghorns.com/
Mast
Lot #H13

M&M Cattle Company
Mark, Misty, Madison, Lane and Lo-
gann Flinchum
Copper Hill, VA
www.MandMCattleCompany.com
Lot #28, 36

Pine Brothers Longhorns
Dave and Luke Pine
Columbia City, IN
www.PineBrothersLonghorns.com
Lot #4, 42

R&B Longhorns
Roy & Beth Landers
Salem, IL
www.rblonghorns.com
Lot #8, 26

R.E. Carroll Ranch
Richard Carroll
Barksdale, TX
Lot #10

Rockin' AF
Vasut Family
Elgin, TX
www.RockinAFLonghorns.com
Lot #22

Rolling D Ranch
Nancy C. Dunn
Eclectic, AL
www.RollingDRanch.com
Lot #31

Rolling Horns Ranch
Austin & Taylor Rohr
Tyler, TX
www.rollinghornsranh.com
Lot #12, 38

Shady Creek Ranch
Greg and Nicky Gilley
Mosheim, IN
www.ShadyCreekLonghorns.com
Lot #H6

Shamrock Valley Ranch
Jim & Barb Steffler
Lapeer, MI
Lot #H16, 30

Sink Longhorns
Jared Sink
Midway, NC
www.SinkLonghorns.com
Lot #2

Sky Ranch Texas Longhorns
Cathy Hawke
Elverson, PA
www.skyranchlonghorns.com
Lot #H10, 29

Sleepy Hollow Longhorns
Mac and Holly Stewart
Coats, NC
www.SleepyHollowLonghorns.com
Lot #25

Sunhaven Farms
Jay and Suzi Wachter
Keymar, MD
www.SunhavenLonghorns.com
Lot #H9

TK Longhorns
Terry and Tammy King
Westville, FL
Lot #24

Triple-R-Ranch
Dick Lowe
Horton, MI
www.rrrlonghorns.com
Lot #16

White Pines Ranch
Scott and Sandy Hughes
Rutherfordton, NC
www.WhitePinesRanch.com
Lot #H2, 9, 39

Consignors



BC Ranch Rule

Part 1- There is a purse of \$2,000 that will be given to the High Seller's team, the consignor and the buyer will each get \$1,000 cash. We want to thank the consignor for putting in a great one and the buyer for thinking she was the best one.

Part 2- "Now U Know". Each consignor, prior to the sale, will fill out their own individual tab for their consignment guessing what their animal will be sold for. The consignor that is closest to the guess will receive a custom Yeti Cooler. If there's a tie the higher seller will win. If that is a tie we're having a dance off and the crowd will chose.

We've Cracked the Code



Stats: 69" at 25 months
Lateral Horn; Color
Huge Bodied

Da Vinci Code	B194747	May 28, 2017
NAME	REG #	DATE OF BIRTH
ALIAS "CODE BREAKER"		
OWNERS Hoosier Longhorns / Double H Partnership Dan & Tracy Jones / Justin & Adrienne Henry		
SIRE Delta Lucky Ace DAM Showtime Mona Lisa		

PROFILE
DA VINCI CODE is an elusive, rare TEXAS LONGHORN bull.
After our interviews regarding the subject, all agree
this is a rare animal because of his pedigree.
The term "OUTCROSS" is used frequently.

Subject has unusually large horn growth & stunning
"BRINDLE" coloring.

Also considered a strong "PRODUCER" of similarly
bodied offspring.

*ask about straw availability.



Delta
Lucky Ace
84.5"

LLL Lucky
x
LLL Delta Dawn



Showtime
Mona Lisa
85.5"

Maximus ST
x
Horse Head Show Time

JUSTIN & ADRIENNE HENRY
DOUBLE H RANCH
DOUBLEH.LONGHORNS@GMAIL.COM
304-283-1974
WWW.DOUBLEHLONGHORNRANCH.COM

DAN & TRACY JONES
HOOSIER LONGHORNS
HOOSIERLONGHORNS@YAHOO.COM
812-698-0442 / 812-698-0441
WWW.HOOSIERLONGHORNS.COM

Christ (kris't), n. "The Anointed";
a name given to Jesus of Nazareth,
synonymous with the Hebrew Mes-
siah.
christen (kris'n), vt. to baptize and
give a Christian name to; to denom-
inate.
Christendom (kris't-dum), n. coun-
tries whose inhabitants profess the
Christian faith; Christians collec-
tively.
Christian (kris'chan), n. a professor
of the religion of Christ; adj. pro-

(kro'mo-sfer), n. a chromosphere
picture produced by chromo-litho-
graphy. [Greek]
chromogen (kro'mo-jen), n. the color-
ing matter of plants.
chromograph (kro'mo-graf), n. an
apparatus for duplicating circulars,
oil-paintings, etc.; a hectograph.
chromo-lithography (kro'mo-lith-
o-gra-fi), n. the art of printing in
colors from stone.
chromosphere (kro'mo-sfer), n. the
rose-colored outer envelope of the

WORKING HARD ON YOUR FARM DESERVES A TRIP TO SANDALS



JOHN@YAKESTRAVEL.COM

YAKES
TRAVEL

WWW.YAKESTRAVEL.COM

2201 EAST MARKET STREET
YORK, PA 17402
717-751-2284



Sponsorship Spotlight

Bolen Longhorns

Lufkin, TX (100 miles north of Houston in East TX) | Since July of 1995, 24 years



BRENT & CINDY BOLEN

What is your goal for your program?

Our goal is to raise an animal that can compete in the show circuit, the horn measuring competitions, futurities and be in the top 5% of a sale. The cattle have to be reliable, which means they have to be sound, fertile, and well structured.

What is your favorite thing about raising Longhorn Cattle?

When we ride through the pastures we evaluate each cow and then talk about how we would breed her, which bull would fix her problem areas. There's nothing better than watching those offspring grow and mature. And even after all these years we still enjoy riding out to look for new babies. We also enjoy the people that come with the cattle. We've made so many friends across the country and some of them are like family now. You'll usually find us making plans with 15-20 people after a sale or show so be sure to stop us to find out the plans when you see us. We'd love to get to know you!

Sponsorship Spotlight

Craft Ranch/G&G Longhorns Partnership

South Texas & Rochelle, VA | Partners Since 2012



CRAFT RANCH/ G&G LONGHORNS

What is your goal for your program?

We've always tried to partner on cattle that have been beneficial to each of our programs. We were partners on bulls like Sittin Bull and Outsider and are partners on cows now like Awesome Strawberry and BL Monika. Awesome Strawberry has sold over \$100,000 worth of offspring and BL Monika heifers continue to fetch top dollar.

What is your favorite thing about raising Longhorn Cattle?

The bonds we've created. Not only are we all great friends, we work together on boards, our families spend time together outside of cattle. There's more to being great partners than just owning cattle together.

Circle Double C Ranch

Taft, TX | 9 Years



CHRIS & CHRISTINA CLARK

What is your goal for your program?

Be one of the premier longhorn herds in the country.

What is your favorite thing about raising Longhorn Cattle?

The people I have met. Without the camaraderie of the friends I have made, I don't know if I would be still raising longhorns. People are what makes this industry so great. If you aren't having fun then why would you do it?

The Cow Gals - Rolling D Ranch & Broken Spur Ranch

Eclectic, Alabama & Lonoke, Arkansas | 30 years & 13 years



NANCY DUNN & KATHY KITTLER

The Cow Gals have enjoyed traveling across the country attending longhorn events and new meeting new friends along the way. Rolling D Ranch located in Eclectic, Alabama is operated by Nancy Dunn who has been raising longhorns for 30 years. Broken Spur Ranch located in Lonoke, Arkansas is operated by Kathy Kittler who has been involved in longhorns for 13 years.

What is your goal for your program?

Nancy strives to raise total package cattle that demonstrate consistent production. Total package requires correct conformation, adequate horn, color and good disposition. Jointly, The Cow Gals' goal is to produce animals that are versatile in use, able to excel in horn competitions, futurities, the show ring and have high hanging weights for beef production.

What is your favorite thing about raising longhorn Cattle?

The uniqueness of each longhorn is fascinating and we appreciate them for their individuality. The joy they bring us, coupled with the wonderful longhorn people they have brought into our lives, is the greatest reward of being a longhorn breeder.

Sponsorship Spotlight

G&G Longhorns

Rochelle, VA | Since 1988



ANN GRAVETT

What is your goal for your program?

"Enjoying the cattle." I love to be a part of the longhorn industry. I very much enough the people associated with the breed. I want to be able to continue to encourage the east coast industry with sales, futurities, and get together and to promote the animals as well as promote the good times that can be had at the events. With Bear and Shawn, I have a great team to work with.

What is your favorite thing about raising Longhorn Cattle?

As most with say, it's seeing those new babies being born. It makes me realize how much I need to stop and take in the beauty of the cattle and the land they live on.

Sponsorship Spotlight

J&J Longhorns

Port Royal, PA | Since 2013



JOHN KING

What is your goal for your program?

To raise a complete package Texas Longhorn, big body, size, great conformation, great temperament, and of course that thing that really defines a Texas Longhorn, HORN length.

What is your favorite thing about raising longhorn Cattle?

A number of things, #1 I would say the new people I have met and the friendships that have been made. #2 The different colors of these cattle. They can be born one color and 2 years later be totally different color. #3 is how docile these animals are.

Grove Cattle Company

Bailey, NC | Since 2008



DAN GROVE & FAMILY

What is your goal for your program?

Our goal is to continue raising exceptional animals while treating people fairly.

What is your favorite thing about raising Longhorn Cattle?

The cattle are great, but the people are the best! Complete strangers become like family in a weekend.

TK Longhorns

Westville, FL | Since 1992



TERRY & TAMMY KING

What is your goal for your program?

Our goal is to raise the ultimate total package longhorn. We have fun placing in the futurities and horn measuring but still realize the importance of these cattle still being profitable as beef cattle. We would love to see the breed recognized as such. We expect our longhorn herd to be as productive as our commercial herd in all aspects such as breeding, milking and beef production.

What is your favorite thing about raising longhorn Cattle?

The anticipation of a calf being born is our favorite thing. With the many color options and the answer of bull or heifer it never loses its appeal.

Sponsorship Spotlight

E&L Texas Longhorn Farms

Dandridge, TN | Since 2005



JERRY LOVEDAY

The farm is nestled in Dandridge, TN in the foothills of The Great Smoky Mountain, between two great lakes, Douglas Dam and Cherokee Dam. We are just a hop skip and a jump from Dollywood, Dolly Parton Stampede where Texas Longhorn steers are part of the dinner attraction. I purchased my first 6 young heifers and a bull in 2005. Their pedigrees were heavily influenced by my mentor and friend, Mr William "Bill" Derey. I attended my first 3 Texas Longhorn sale in the spring of 2006: B & C Sale, Cherry Blossom Sale, and Gulfport Mississippi Sale with Maurice Ladnier. By then I was fully addicted.

What is your goal for your program?

When I came on board, the cows were just crossing that 70" T2T milestone. The Magnificent Seven had been found and measured. My goal was to have at least one 70" T2T cow in my herd. Color, pedigree and confirmation fascinate me.

What is your favorite thing about raising longhorn Cattle?

By far my favorite thing I enjoy about the Texas Longhorns is finding their calves.

Sponsorship Spotlight

AML Longhorns

Grand Rapids, MI | Since 2010



ANDY & COLBY MAST

What is your goal for your program?

To raise colorful, correct quality animals we enjoy looking at and we hope others would enjoy also.

What is your favorite thing about raising longhorn Cattle?

Watching the calves run in the pasture!

Triple R Longhorns

Horton, MI | Since 1997



DICK LOWE

What is your goal for your program?

We are working with a blend of the seven families to produce cattle with size, conformation, color, gentleness and lots and lots of horn.

What is your favorite thing about raising longhorn Cattle?

Like We love the cattle and spring is the best time of year when the new calves are hitting the ground.

Ricky McLeod

Manning, SC | 6 Years



RICKY MCLEOD

What is your goal for your program?

More quality animals, not quantity. To establish a great core group and build on that to improve my herd.

What is your favorite thing about raising Longhorn Cattle?

Spending time with my cattle is the best part of my day!

Sponsorship Spotlight

FHR Longhorns

Krum, Texas | 2 Years



DALE METZ

What is your goal for your program?

We have sought out the best professionals in the longhorn industry to learn how not to just buy longhorns but to better the breed. The goal, for our animals, is for them to produce beautiful color, great horn growth, exceptional conformation, and gentle dispositions. Additionally, FHR Longhorns is happy to play a role in contributing to bright, young students' ability to reach their educational goals. We provide select animals to be shown by exceptional students. These students are selected based on their maturity, eagerness and understanding of what it takes to maintain the animals' health and well-being. Because of the students' willingness to accept the challenge and work hard, we provide the means to assist them in contributing to their own future by earning scholarship funds for college. Another passion for our program is to give back. FHR's favorite charities are the Custom Made Kid Foundation™ and the Green Beret Foundation.

What is your favorite thing about raising longhorn Cattle?

There is nothing more peaceful than sitting in the pasture at sunset surrounded by beautiful animals. However, it's not just the longhorns that get to you. It's the people in the industry, as well. We have met many people who have taken us in and helped us in every way they can. The best word picture I can give is...Think of your favorite church you have ever experienced and the feeling of family you had while there, and that explains how longhorn family feels. The industry is such a pleasure to be a part of, and we look forward to being involved for many years to come.

Sponsorship Spotlight

Lonesome Pines Ranch

Smithville, TX | Since 1992



JOHN & CHIRSTY RANDOLPH

What is your goal for your program?

To maintain the integrity of the breed, by raising functional and correct cattle. We want to succeed in the sale ring, in the show ring and have success in futurities. While we enjoy having big horned animals, it is important to us that we have good genetics that maintain the great milking ability and easy birthing. Establish a market for selling our beef.

What is your favorite thing about raising longhorn Cattle?

What's not to like? Beautiful cattle that bring in visitors from all over the country. We've made terrific friends that will transcend time. Keeps us well fed and content.

Crazy Cattle Co.

Wellsville PA | 23 years



SHAWN & SEASONS PEQUIGNOT

What is your goal for your program?

We have always tried to raise cattle suitable for all levels of breeders. From new people starting out to established breeders trying to add good cattle with good genetics to their existing programs. We are hoping to continue this, and expand on this, when we go work with G&G in the near future.

What is your favorite thing about raising longhorn Cattle?

Our absolute favorite part of raising Longhorns are the people. We have met some of the greatest people and made memories that wouldn't have been possible if it weren't for the Longhorns. Not all family is blood.

Rocky Meadow Longhorns

Middletown, PA | Unregistered since 2009, Registered since 2016



RYAN & BRANDY SCHMIDT

What is your goal for your program?

To raise good quality cattle that are desired by others.

What is your favorite thing about raising longhorn Cattle?

The great friendships that we've made.

Sponsorship Spotlight

Sink Longhorns

Winston-Salem, NC. | Since November of 2013



JARED SINK

What is your goal for your program?

It would be nice to be able to raise longhorns for a living, but as of right now Im just trying to enter my best animals into these sales. Nothing beats going to a sale and seeing peoples best cattle and being able to gather with good friends!!

What is your favorite thing about raising longhorn Cattle?

There's nothing better in this industry than the people!!! I started from scratch with no knowledge and within months i was getting information and help from some of the best breeders in the industry with nothing asked in return! Just great people and beautiful cows!

Sponsorship Spotlight

Rockin AF Ranch

Elgin, TX | 9 Years



CHASE VASUT

What is your goal for your program?

My goal is to breed a great all around cow with color, low twist and very good disposition.

What is your favorite thing about raising longhorn Cattle?

My favorite part of raising Longhorns is the people. From all walks of life I have made some amazing friends in this industry. I look forward to many years raising these cattle and many memories with new and old friends.

Shamrock Valley Ranch

Lapeer, MI | 20 years



JIM STEFFLER

What is your goal for your program?

Relaxation, Fun and Enjoyment provided by a Beautiful Herd of Longhorns.

What is your favorite thing about raising longhorn Cattle?

Calving season for sure. It's fun to watch the young ones play games with each other.

Yake Ranch

New Oxford, PA | 1 Year



JOHN & TAMI YAKE

What is your goal for your program?

Goal is to Build a solid breeding program.

What is your favorite thing about raising longhorn Cattle?

Like the uniqueness of the breed, horn size, health meat.

DOB: 10/23/09 | BANDERA CHEX X RINGALING BCB
 Owned in partnership with Jimmy Jones, Terry King & Nancy Dunn




FIFTY-FIFTY BCB
CHAMPION MAKING SIRE

BRENT & CINDY BOLEN
 584 DAVISVILLE ROAD - LUFKIN, TX 75901
 WWW.BOLENLONGHORNS.COM | (936) 639-6590



THE COW GALS

"Just waiting on the next generation
of calves and young'uns."

NANCY DUNN
 ROLLING D RANCH
 334 318 0887
 www.rollingdranch.com

KATHY KITTLER
 BROKEN SPUR RANCH
 501 690 0771
 www.broken-spur-ranch.com

SEPT. 13, 2019
7:00 PM



BID ON-LINE: WWW.HIREDHANDLIVE.COM



WPR LITTLE GIRL DRAGGY

Donated by Scott & Sandy Hughes



DOB: 7/12/18

PH#:

REG: PENDING

SIRE: YR LADIES MAN (MK CHEX MATE X SPECIAL OCCASION)

DAM: YR IRON SWEETIE (DRAG IRON X PEACEMAKERS SWEETIE 067)

PROCEEDS BENEFIT THE TEXAS LONGHORN LEGACY GRANT.

Texas Longhorn breeders are family. They have roots and youth, and, like any family, they have needs. The Texas Longhorn Legacy Group is committed, on the one hand, to preserving and honoring roots of both the breed and of important breeders, and on the other to helping fellow breeders in need. Toward that end, "The Longhorn Legacy Grant is designed to help

longhorn families address the epidemic of educational debt while, at the same time, making sure that the future of the breed doesn't forget the past while immersed in the present. Whether that debt arises from loans for college, a technical school, or some other recognized educational institution for which student loans are available, the goal is to help pay down, or off entirely, educational debt for Longhorn breeders.

We understand the significant sacrifices that every breeder incurs when they become involved in this industry we love so much. The goal is to make a direct impact on those with heavy debt while, in return, asking them to help all of us remember some of the Giants in this breed who are no longer here.

Those who apply for a grant will be asked to research and write an in-depth two part essay about past breeders who made a memorable impact on the breed while alive, folks like Ben Gravett, Joe Graddy, Joe Valentine, Mike Bowman, Mel Raley, John Allen, Bill Le'An, and Bill Davidson to name just a few. The first part will consist of interviews with friends and family of the person being remembered followed by a footnoted biographical sketch of that person of no less than 1,500 words. The second requirement will be an autobiographical sketch explaining the applicant's involvement in the breed, including but not limited to a description of their program, why and how they became interested and involved in the breed, their goals, and how debt is affecting their progress and their life in general. Each report submitted, whether a winner or not, will become the property of the Texas Longhorn Legacy Group, will be available, with proper attribution, to breeders and the public, and may be published in trade magazines or other media. The Texas Longhorn Legacy Group will be the sole judge of whether to make any award in a given year, and each award, if any, will be based on merit and not on any other criteria. Each year a panel of Longhorn breeders will be selected to review applications and to determine whether an award is justified and, if so, to whom it shall be given. Any winner will be honored and his or her check will be presented at the next Legacy Sale.



LAZY J'S DOMINATRIX

Lazy J Longhorns, Joe Sedlacek



DOB: 3/22/18 **PH#:** 11/8 **Reg:** CI315712
Breeding: Sells unexposed.

Comments: Bear asked for the best, well here she is, this is the best 2018 heifer on the ranch and what we think this is one of the best we have ever raised. **Fifty-Fifty BCB** and 92" **Vanilla Milkshake** on top and one of the largest horned JR branded cows that Ron Jones ever raised as her mother. Her mom is pushing close to 90" TTT and a big framed female. Get your hands up, she came to sell and she'll make you money.

SIRE: FIFTY SHADES DARKER (**FIFTY-FIFTY BCB** X MILKSHAKES MCFLURY)
DAM: **JR TRIXI** (KC JUST RESPECT X J.R.TREASURE)



WPR YUMMY

White Pine Ranch, Scott & Sandy Hughes



DOB: 3/3/18 **PH#:** 8/14 **REG:** CI314303
BREEDING: Sells unexposed.

COMMENTS: If you like brindle, full bodied heifers with wonderful pedigrees you'll love this cow. Her dam is a well built cow with a ton of horn that always stays in great body condition, year round. Her sire, Money in the Bank Chex, is a son of the \$165,000 100" TTT **Cowboy Tuff** bull and out of the big, brindle **BL Safari Sue**, going back to Peacemaker and **Night Safari**. This heifer has it all going on.

SIRE: MONEY IN THE BANK CHEX (**COWBOY TUFF CHEX** X **BL SAFARI SUE**)
DAM: TP YUM YUM (SHILOHS THUNDERHEAD 443 X)



HBR SITTIN MAGGIE

Home Branch Ranch, Ricky McLeod



DOB: 6/16/17 **PH#:** 707 **REG:** CTI308283
BREEDING: KCCI Flamethrower from 6/2/19 to sale date.

COMMENTS: A real colorful heifer sired by the 90" TTT **Casanova's Magnum**. On the bottom side you go back to the \$1,000,000 syndicated Sittin Bull and out of the 90" TTT **BL Monika** (Coach x **Lady Monika BL**). She's bred to our nice brindle bull out of **Bubba Tuff Chex**. Can't go wrong with this one!

SIRE: **CV CASANOVA'S MAGNUM** (**CV COWBOY CASANOVA** X HUBBELLS RIO TAFFY III)
DAM: **SITTIN MONIKA** (SITTIN BULL X **BL MONIKA 645**)

HOME BRANCH RANCH

LOT H3 HBR SITTIN MAGGIE
CV CASANOVAS MAGNUM x Sittin Monika
DOB: 6/16/17
EXPOSED TO KCCI FLAMETHROWER

LOT 33 WS VINDICATOR X
RRR MISS HOT STUFF EMBRYO

RICKY MCLEOD, HOME BRANCH RANCH
4823 Home Branch Road, Manning, SC 29102
Phone: (803) 983-0816 | Email: wrricky@ftc-i.net
WWW.HOMEBRANCHRANCH.COM



LC MISS CALIBER

Longhorn Creek Ranch, Brian Varner



DOB: 3/1/18 **PH#:** 66 **REG:** CTI316429
BREEDING: Sells unexposed.

COMMENTS: OCV'D. LC Miss Breeze is our stand out 2018 heifer. Her sire, Top Caliber needs no introduction and her 84" TTT dam, **JP Grand Unbluffed** Cow, is producing some awesome up and coming heifers. This heifer has what every program wants pedigree, horn, and color. She was over 30" TTT at 12 months and has the horn direction to continue. She is very correct and we want you take a hard look at her. Thanks for your consideration. www.longhorncreek.com

SIRE: TOP CALIBER (HUNTS COMMAND RESPECT X HASHBROWN)
DAM: JP GRAND UNBLUFFED (J.R. GRAND SLAM X UNBLUFFED)



DR CHEROKEES EMPRESS

D-R Henry Ranch, David & Retta Henry



DOB: 3/8/18 **PH#:** 118 **REG:** 277371
BREEDING: Sells unexposed.

COMMENTS: DR Cherokees Empress was sired by a **Cowboy Tuff Chex** son, Cherokee AKA TSA-LA-Gi and Debbie Bowman's breeding on the bottom, Titans Empressa EOT 504. Flashy, thick body and starting to bridle. Measured 33" at 1yr.

SIRE: CHEROKEE (COWBOY TUFF CHEX X EOT CHERRYPICKER'S LEWEZE)
DAM: TITANS EMPRESSA EOT 504 (TITAN EOT 8E8 X CASH'S EMPRESS 943)



HOT INVESTMENT

Shady Creek Ranch, Greg & Nicky Gilley



DOB: 4/7/18 **PH#:** 407 **REG:** Pending
BREEDING: Sells open.

COMMENTS: Fancy young heifer out of the exciting multiple Horn Showcase winning bull, Investment. Investment calves have been showing really well in the futurities. Hot Investments dam brings in The Shadow and Deigos Hot Shot for great old school genetics! Open to bred to your bull.

SIRE: INVESTMENT (COWBOY CATCHIT CHEX X HORSESHOE J LEGIBLE)
DAM: GW HOT SHADOW (THE SHADOW X LTL HOT FOX)

D-R Henry Ranch

AT THE EAST COAST LONGHORN CLASSIC
SEPTEMBER 13TH + 14TH, 2019

LOT #H05
DR CHEROKEES EMPRESS

DOB: 3/8/18
CHEROKEE X TITANS EMPRESSAS EOT 504
33" TTT at 1 Year

A BEAUTIFUL, THICK
DOUBLE-BRED LEZAWHE HEIFER
EXCEPTIONAL GENETICS

STARTING OUR PROGRAM WITH A GREAT FOUNDATION

DAVID AND RETTA HENRY
HEDGESVILLE, WEST VIRGINIA
304-283-6107 • WWW.DRHENRYRANCH.COM

GREG, NICHOLE, AUSTIN,
BEAUX & GRADY GILLEY
MOSHEIM, TN | 641-660-2362
WWW.SHADYCREEKLONGHORNS.COM

SHADY CREEK RANCH

GRANDE SAFARI CHEX
JP Rio Grande x Night Safari BL833
DOB: 8/22/09

INVESTMENT
Cowboy Catchit Chex x Horseshoe J Legible
DOB: 8/30/2015

SHADYCREEKLONGHORNS.COM



LVR WISPY WILLOW

Case Cattle Company, Adam & Julia Case



DOB: 6/6/17 **PH#:** 1758 **REG:** 276296
BREEDING: Exposed to our 4x champion futurity winning bull Equalizer from 05/19 to the sale date.

COMMENTS: Beautiful heifer out of **RHF Sharp Shooter** that needs no special introduction. Measured at 56" TTT on her 2nd birthday and on track to be over 80". Wispy Willow has a bright future and will be a spectacular cow for your herd. Those red speckles are really starting to burst.

SIRE: RHF **SHARP SHOOTER** (TOP CALIBER X BURNIN DAYLIGHT)
DAM: SUNHAVEN WILLOW (PB MR. CHARLIE X TORO DOLLY)



HC HIGH OVER U

Hatcreek, Arlan & Elizabeth Bush



DOB: 3/15/18 **PH#:** 48 **REG:** Pending
BREEDING: Sells unexposed.

COMMENTS: OCV'd This heifer will be a hard one to part with as well. She has exceptional lateral horns and will just continue to get better and better. She will definitely add to anyone's program. An easy keeper. She sells with HC Ready Whip and bidder take choice.

SIRE: HL HANG EM HIGH (JOHN CHISHOLM X **PLAYGIRL PC354**)
DAM: WPR OVER DUNN IT (**JP RIO GRANDE** X DUNN DOUBLE OVER)



HC READY WHIP

Hatcreek, Arlan & Elizabeth Bush



DOB: 2/6/18 **PH#:** 38 **REG:** Pending
BREEDING: Sells unexposed.

COMMENTS: OCV'd This heifer is a hard one to let go...she is a big pet and loves to be nosey....she has conformation...and personality for sure....do not miss this good heifer...sells with HC High Over U and bidder take choice...

SIRE: WHIPLASH 39 (**FIFTY-FIFTY BCB** X J. R. DIVINE)
DAM: HC DESPERATE CATCHIT (**COWBOY CATCHIT CHEX** X MISS WRIGHT DESPERATE)

LVR WISPY WILLOW

703 RHF SHARP SHOOTER X SUNHAVEN WILLOW | DOB: 6/16/17
56" TTT ON HER 2ND BIRTHDAY | EXPOSED TO EQUALIZER

EQUALIZER SHARP SHOOTER

LOT #H7

ADAM CASE | WENDELL, NC | 919-270-3568 | CASELONGHORNS.COM

SKY RANCH TEXAS LONGHORNS

LOT H 10

LOT 29

CUT N DRIED

DROP BOX

Overdressed Overkill x Top Contest
dob 4/7/14. Produced 4 gorgeous heifers.
Her 2017 heifer lot 10 in heifer sale.
June 2019 heifer by Cut n Dried sells at
side. Exposed back to Drop Box for an
amazing 3 in 1 package. ocv. Preg status
announced at sale .

Dressed to Thrill Reckon So x Overdressed
Stunning heifer dob 5/23/17. Exposed to
Flair Galore. This calf should be incredible.
ocv. Preg Status announced at sale.

Cathy Hawke
www.skyranchlonghorns.com
610 - 913 -1224



SUNHAVEN QUIGLEY FIST FULL

Sunhaven Farms, Jay & Suzi Wachter



DOB: 10/12/17 **PH#:** 77 **REG:** 278724
BREEDING: Sells unexposed.

COMMENTS: Big deep bodied red heifer that'll throw you lots of loud color. She's sired by a son of the \$100,000 **Casanova bull** x TXX W Morning Star (Full sister to Hubbells 20 Gauge's dam). On the bottom side you have a **Rio Grande**, WF Gravenstein (Full genetic brother to Sittin Bull and **Top Caliber**) as well as the big time Whelming King daughter, Double Fistful. This heifer has a ton of depth to her body, awesome horn set. She's the real deal.

SIRE: SUNHAVEN QUIGLY (**CV COWBOY CASANOVA** X TX W MORNING STAR)
DAM: SUNHAVEN TAHOE'S FISTFULL (SUNHAVEN RIO'S TAHOE X SUNHAVEN GRAVYS FISTFULL)



DRESSED TO THRILL

Sky Ranch Texas Longhorns, Cathy Hawke



DOB: 5/23/17 **PH#:** 47 **REG:** 274979
BREEDING: Exposed to **Flair Galore** startin May 1st until sale date.

COMMENTS: Reckon So daughter. DOB 5/23/17. Pedigree is a who's who for big horn (**Cowboy Tuff Chex**, **Drag Iron**, **Top Caliber**); throw in Overkill for conformation and you have a heifer ready to produce futurity prospects. Exposed to Flair Galore, an exceptional colorful big horned bull; his offspring not offered to the public. Rare opportunity for these genetics. OCV'd. Preg status announced at sale. Her dam Overdressed sells in cow sale Lot 29. She's drop dead gorgeous!

SIRE: RECKON SO (**COWBOY TUFF CHEX** X DRAGON PEARL)
DAM: OVERDRESSED (OVER KILL X TOP CONTEST)



2A CATCHIN MELANIA

Double A Longhorns, Aaron Adkins



DOB: 4/4/18 **PH#:** 8/3 **REG:** CI314296
BREEDING: Sells open.

COMMENTS: Here she is. A super nice young **Cowboy Catchit Chex** daughter that would look great in your pasture. These Catchit offspring are in high demand and I am offering you one of our best. She comes straight from the heart of our program. Cowboy Catchit Chex is quickly proving himself as one of the greatest producers the breed has ever seen. She is left open for you to breed to the bull of your choice. A loaded pedigree and a heifer that is bred for horn and size. You can't miss here. Here's your chance.

SIRE: **COWBOY CATCHIT CHEX** (COWBOY CHEX X **BL RIO CATCHIT**)
DAM: 2A GORGEOUS TRUMP (HELM TRUMP X HUBBELLS RIO GORGEOUS)

HUBBELLS 20 GAUGE 84.62" TTT **AML'S RAM RED ROSE +80" TTT**

CONSISTENTLY PROVEN

LOT H13

AML RED ROSE'S GLORY DOB: 4/17/2017
HUBBELLS 20 GAUGE X AML RAM'S RED ROSE

AML ROSE'S RUBY DOB: 7/9/15 83.75" TTT
HUBBELLS 20 GAUGE X AML RAM'S RED ROSE
SOLD AT HVS 2017 FOR \$16K
SOLD AT LEGACY 2019 FOR \$17K

AML RED ROSE'S CROWN DOB: 6/8/16
HUBBELLS 20 GAUGE X AML RAM'S RED ROSE

WWW.MICHIGANMAFIALONGHORNS.COM/MAST



GLH MAGNUM'S HALEY

Hershberger Cattle, Gary Lee Hershberger



DOB: 10/5/16 **PH#:** 3/6 **REG:** 274755
BREEDING: AI'd to **The Beast**.

COMMENTS: Haley is a quiet heifer, will eat out of your hand, measured 59.75" TTT at 2 years old. Will be AI'd to **The Beast**. She calved 5/2/19 with a bull calf that I'm keeping. Will post her breeding dates, horn measurement on Facebook. A very good bred heifer.

SIRE: CV CASANOVAS MAGNUM (CV COWBOY CASANOVA X HUBBELLS RIO TAFFY III)
DAM: IRON POWER (DRAG IRON X POWER LAP)



AML RED ROSE'S GLORY

Mast Longhorns, Andy & Colby Mast



DOB: 4/17/17 **PH#:** 706 **REG:** C1309683
BREEDING: Sells unexposed.

COMMENTS: OCV'D. Here's a beautiful **20 Gauge** daughter going back to **ZD Kelly** and **WS Jamakizm** on the bottom side. These heifers are special. Be sure to check this one out.

SIRE: HUBBELLS 20 GAUGE (CONCEALED WEAPON X HUBBELLS RIO GLORY)
DAM: AML RAM'S RED ROSE 125 (RRR RAMILLETE'S EDGE 001 X RRR MISS ROSIE J 006)



LTL LADY LUCK

Leonard Ranch, Tyson Leonard



DOB: 6/2/18 **PH#:** 88 **REG:** Pending
BREEDING: Sells unexposed.

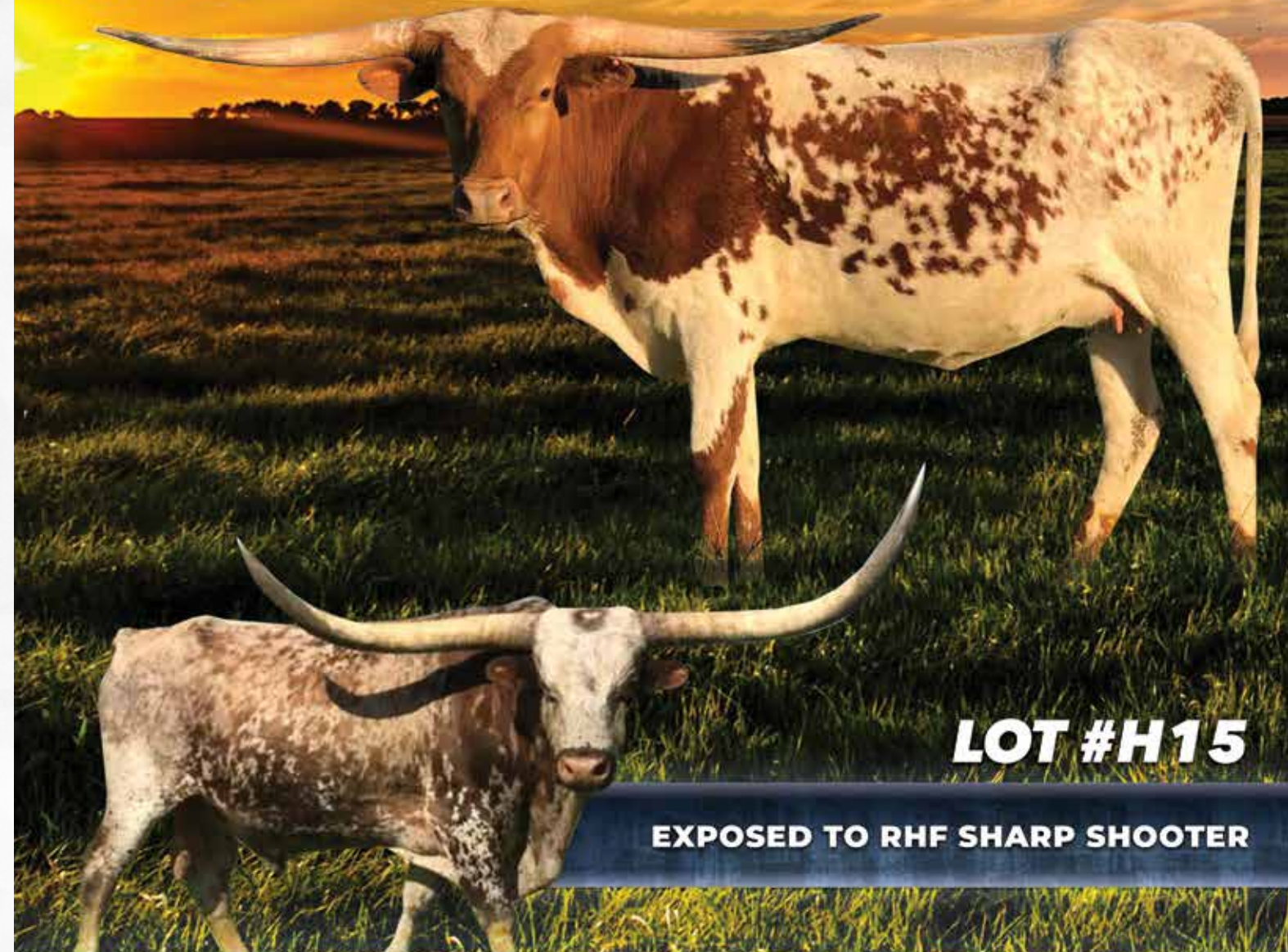
COMMENTS: Sired by **RC Tsunami** (who's out of **Pacific Mermaid**, one of the few cows with the most 90" TTT offspring) who has a low twisty horn set and is recognized for putting low, lateral horns on his progeny out of total horn cows. Her dam, Lucky Lady, sired by \$100,000 **Cowboy Casanova** has 5 ancestors over 80" TTT and goes back to Maximus ST Breeding on the bottom side. A nice yearling with a ton of potential.

SIRE: RC TSUNAMI 2 (CONCEALED WEAPON X RC PACIFIC MERMAID)
DAM: CV CASANOVAS LUCKY LADY (CV COWBOY CASANOVA X CV MAXINE'S MILLIONS)



LVR SPARKY LOLA

SDR SPARTACUS X SUNHAVEN IVANHOE TORO
DOB: 11/22/16 | 54.5" ON 3-17-19



LOT #H15

EXPOSED TO RHF SHARP SHOOTER

DAN AND KRISTI GROVE
252-373-2926 | DAN@GROVECATTLE.COM
WWW.GROVECATTLECOMPANY.COM

LONESOME PINES RANCH

LOT #H17, KETTLE'S STAR
BLACK KETTLE X BRR PACIFIC STAR
DOB: 11/6/17

SERVICE SIRE: LOT H17

LUCKY REPLAY 17/7
LLL LUCKY X JBM BECCA II
DOB: 3/2/17

LOT #23, CERSEI DE PALO PINTO SRC
JP RIO GRANDE X 7LS MISS GAMBLER
DOB: 9/4/12

SERVICE SIRE: LOT #23

PEARL SNAP BCB
DOB: 1/23/15
BANDERA CHEX X WULFCO'S SHADOW DANCER
OWNED IN PARTNERSHIP WITH BRENT AND CINDY BOLEN

JOHN & CHRISTY RANDOLPH

512-360-4299 OR 713-703-8458

SMITHVILLE, TX | LPINESRANCH@AOL.COM

Members of the TLCA, ITLA, TLBAA & Partners of the Millennium Futurity

WWW.LONESOME PINES RANCH.COM



BLEND OF THE OLD WITH THE NEW

SW TRANS-4-MATION

DOB: 11/21/17 | COWBOY TUFF CHEX X MI TIERRA 166 | 48.5" TTT
GROWING 3.25" EVERY 30 DAYS. PROJECTS TO BE 64.75" TTT AT 2 YEARS OLD



COWBOY TUFF CHEX
102.25" TTT ON 9/29/18



MI TIERRA 166
82" TTT ON 5/5/18

E LONGHORNS
JERRY LOVEDAY

EANDLTexasLonghornFarms.com

H15

LVR SPARKY LOLA

Grove Cattle Company, Dan & Kristi Grove



DOB: 11/22/16 **PH#:** 16/66 **REG:** 276302
BREEDING: Bull calf at side by Excelerator born 5/2/19.
Exposed to **RHF Sharp Shooter** from 5/2/2019 to sale date.

COMMENTS: "Lola" missed her calling as a futurity heifer. What's not to love? Flat horn and plenty of it? Well bred? Great conformation? Plenty of color? Great mama with plenty of milk and a perfect udder? Docile and easy going? She's got it all. Sells with your future herd sire at side by Excelerator (Expedite **X Sittin Pearl**). To top it off she has been exposed to the legendary **RHF Sharp Shooter**! She's the kind of cow to build a program around if you want to be successful. For more information www.grovecattle.com

SIRE: **SDR SPARTACUS** (**JP RIO GRANDE** X **SDR SWEETIE**)
DAM: **SUNHAVEN IVANHOE TORO** (**SUNHAVEN IVANHOE** X **TORO DOLLY**)

H16

HIGH LINE

Shamrock Valley Ranch, Jim & Barb Steffler



DOB: 4/28/17 **PH#:** 201/7 **REG:** CI307451
BREEDING: Exposed to Pistol Packer from 10/31/18 to 6/1/19.

COMMENTS: This sleek, black, young heifer is bred for the "Total Package". Combining genetics from most of the great lines in the breed. These genetics include: Horn genetics, **Jester 90"** TTT twice, HCR & Butler. Body size & color genetics, **Jamakizm**, Overkill, Winchester & **Drag Iron**! Not only does she carry all the above "Top Shelf" genetics but she doesn't have any **JP Rio Grande/Cowboy Tuff Chex** genetics, making her the perfect out cross female to breed to bulls from that outstanding and popular line. That's exactly what we did. We combined High Lines, "Total Package" Genetics with **Cowboy Tuff** Genetics!!! She is palpated bred to Pistol Packer, a Black/red brindle Lineback bull sired by **Cowboy Tuff Chex** and he's out of a 91" **Jamakizm** Daughter!! That cross will add more color and even more Horn Genetics. Her calf will have four over 90+"TTT cows plus the 102" Tuff!

SIRE: **HIGH NOON** (**HUNTS COMMAND RESPECT** X **JESTER**)
DAM: **ANNEX LINE** (**ANNEX** X **SUPERIOR SUSPECT**)

H17

KETTLE'S STAR

Lonesome Pines Ranch, John & Christy Randolph



DOB: 11/6/17 **PH#:** 722 **REG:** 278157
BREEDING: Exposed to Lucky Replay from 3/20/19 to sale date.

COMMENTS: A very nice heifer showing size and correctness; out of the infamous Black Kettle and a dam that goes back to Lodestar and **Jamakizm**. We have her exposed to Lucky Replay, who is an embryo calf out of LLL Lucky and **JBM Becca II**. She did damage one horn, but it has not inhibited the growth at all. We will have current pregnancy status and horn measurements at the sale. All offspring Millennium Futurity eligible. She's as slick as a new minted penny!

SIRE: **BLACK KETTLE** (**SITTIN BULL** X **PC CINNAMON SPICE**)
DAM: **BRR PACIFIC STAR** (**LODESTAR 43/2** X **PACIFIC HARMONY**)

CR STRONG MEDICINE

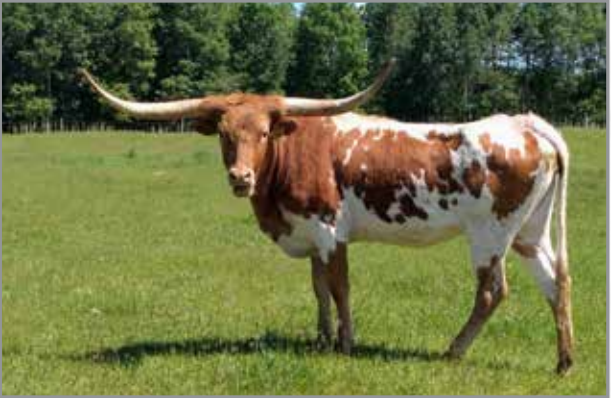
5D Ranch, Dan & Denise Huntington

H18

DOB: 3/19/17 **PH#:** 45/7 **REG:** 277745
BREEDING: Breeding to be announced, currently not exposed.

COMMENTS: A super looking young **Concealed Weapon** daughter we purchased from Alex Dees, really hate to part with this kind of heifer, but it's the East Coast Classic and we wanted to bring a good one! She was 53.25" way back in December I will have updated breeding along with measurements at sale time.

SIRE: **CONCEALED WEAPON** (**SHARP SHOOTER 542** X **HORSESHOE J EXAMPLE**)
DAM: **MTR MEDICINE GIRL 13/100** (**MEDICINE MAN EOT 16/10** X **MI TIERRA VACA 01**)



G&H SWEET & LOW

Gravett/Hunt Partnership, Ann Gravett & Dale Hunt

H19

DOB: 9/9/18 **PH#:** 855 **REG:** Pending
BREEDING: Sells unexposed.

COMMENTS: This is a knock out little heifer coming from two top notch programs. On the top side you have a ton of power, mid 80s **Concealed Weapon**, over 90" TTT **Horseshoe J Example**, 97" TTT+ **Eternal Flame**, 90" TTT + **Eternal Tari**. On the bottom side you have **RM Checkered Flag** who sired the over 90" \$360,000 **3S Danica** along with the 80" TTT **Haley's Diamond**, and lateral twist **G&H Pure Sugar**. This heifer should be the 3rd generation of twist. Just look at the power. There's no Tuff, Catchit, Rio, HCR, Tejas Star, MC Super Rex, Houdini, Sharp Shooter, Sniper, she'll make a great outcross to any program.

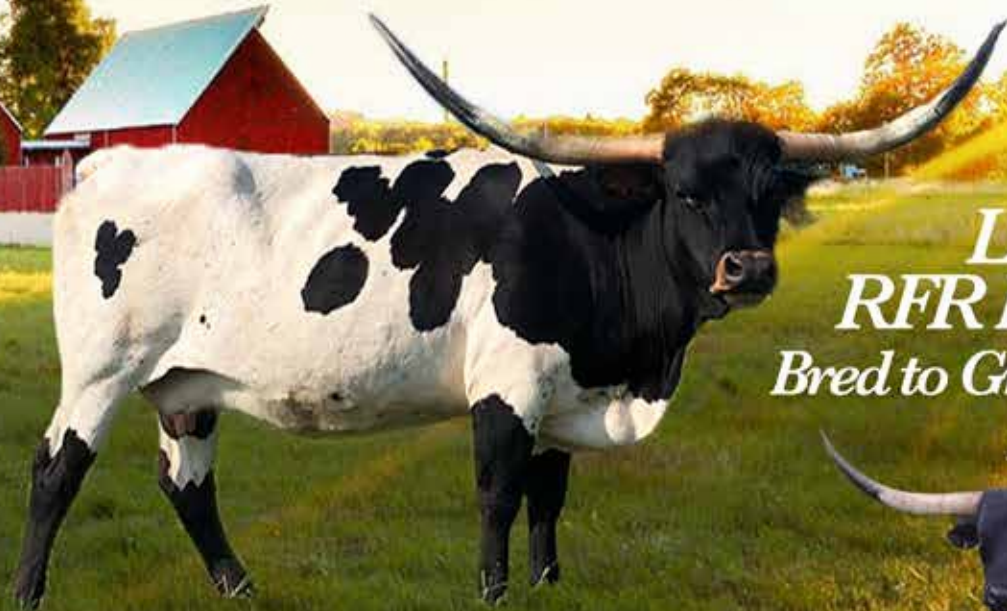
SIRE: **3P CONCEALED HAMMER** (**CONCEALED WEAPON** X **SHAMROCK ETERNAL FLAME**)
DAM: **G & H PURE SUGAR** (**RM CHECKERED FLAG** X **RRR HALEY'S DIAMOND 526**)



THIS CONCLUDES OUR FRIDAY SALE.
PLEASE JOIN US SATURDAY AT 11:00.

Notes

FLYING H LONGHORNS



LOT #27
RFR Deluges Girl
 Bred to Grande Safari Chex
 DOB: 8-1-11



FEATURED LONGHORNS



FH Foll's Queen of Hearts



Foil Dragery



FHF Dragin' 20



FHF Top Star

Todd Hensley
 423-943-5758

flyinghcattlecompany.com

Jesse Hensley
 423-737-5605

HUGE OFFERINGS IN SIZE, HORN, PEDIGREE, AND PRODUCTION



& BIG COLORFUL

LOT 1 - RRR MISS SUPER GWEN - 10/30/12

MC SUPER REX X JR GLEEFUL 87"TTT
3 IN 1 BRED TO SNIPER



HEIFER SEXED SEMEN AVAILABLE
 \$250/STRAW

SERVICE SIRE

SNIPER- 2/23/12
 OWNED WITH DEBBIE BOWMAN

RHF SHARP SHOOTER X KC WINTER QUEEN
86"TTT

PROUDLY OFFERED AT THE EAST COAST CLASSIC LONGHORN SALE
SEPTEMBER 13 & 14TH, 2019

G&G LONGHORNS

Ann Gravett, Rochelle, VA 22738
 Ranch Manager: Bear Davidson ~ Cell (540) 687-0050
 E-mail: beardavidson@gmail.com
www.gandglonghorns.com





RRR MISS SUPER GWEN 266

G&G Longhorns, Ann Gravett



DOB: 10/30/12 **PH#:** 266 **REG:** 262931
BREEDING: **Sniper** from 11/23/18 to 2/25/19 and from 6/25/19 to sale date.

COMMENTS: This is one of the most impressive cows you've ever seen. She measured 87" TTT in March of 2019 and weighs 1300lbs- she's large. She's an easy keeper and always carries great flesh on her, just what you want in a mama cow. She's never been flushed. She's bred to **Sniper**, our 86" TTT black and white LWC winner. This cross should be magical.

SIRE: M.C. **SUPER REX** (SUPER BOWL X J.R. OPUS)
DAM: J.R. GLEEFUL (GUNMAN X J. R. JOYFUL)



GRANDE PRINCESS

Sink Longhorn, Jared Sink



DOB: 8/17/15 **PH#:** 53 **Reg:** 280513
Breeding: Exposed to Rural Legend from 8/7/18 to sale date.

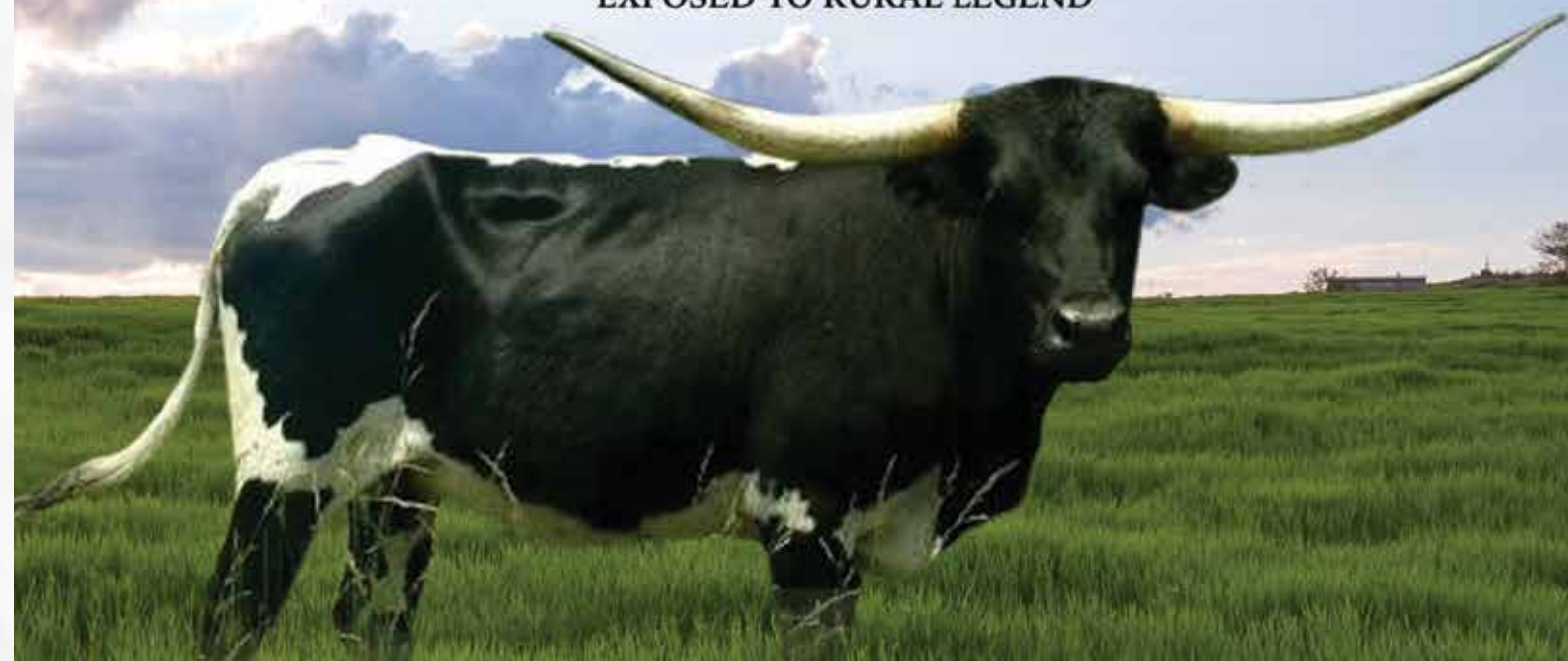
Comments: Here's a cow with a strong pedigree that can add to anyone's program. She's gentle as can be and will take treats from your hand. Exposed to Rural Legend, a **RHF Sharp Shooter** making him a half brother to the 92" TTT **TCC Houdini** and over 90" TTT **Patton** bull and out of **Sittin Monika** by the famed **BL Monika** cow. Measurement will be announced at sale.

SIRE: RML GRANDE LOBO (GRANDE SAFARI CHEX X SDR RIOS PRINCESS)
DAM: TEMBEL (**TEMPTER** X UNBOUNDED SYMBOL)

Sink Longhorns

Grande Princess

LOT #2 | DOB: 8/17/15 | RML GRANDE LOBO X TEMBEL
 EXPOSED TO RURAL LEGEND



Here's a cow with a strong pedigree that can add to anyone's program. She's gentle as can be and will take treats from your hand. Exposed to Rural Legend, a RHF Sharp Shooter making him a half brother to the 92"ttt TCC Houdini and over 90"ttt Patton bull and out of Sittin Monika by the famed BL Monika cow. Measurement will be announced at sale.



MATERNAL GRAND SIRE
TEMPTER



PATERNAL GRAND SIRE
GRANDE SAFARI CHEX

SINK LONGHORNS, JARED SINK

336-978-5500 • sinklonghorns@yahoo.com • www.sinklonghorns.com



LAZY J'S KATRINA

Bilgrien Cattle Company, Dave Bilgrien



DOB: 7/18/14 **PH#:** 12/14 **REG:** CI316334
BREEDING: Exposed to 2nd Amendment from 4/15/19 to sale date.

COMMENTS: A gorgeous cow here coming from Greg Sherwood's program bringing in Iron Mike ST and Maximus ST. Both these bulls have had some high selling offspring in their lifetime. On the bottom side you have 5D Crisp's Redman, a daughter of the mid 80" TTT **Crisp Respect** out of the upper 80" TTT **Redman's Legacy**, who's full brother is over 90" TTT. She's bred to 2nd Amendment who's a son of the 6x undefeated **Delta Lucky Ace** (Whose full sister sold for \$61,000) and out of a Jimmy Jones bred **Fifty-Fifty BCB** daughter, Spectacular Feat (whose half sister sold for \$78,000). Wonderful little package here with a ton of marketing power.

SIRE: HURRICANE ST (FREIGHT TRAIN ST X RUBY RED ST)
DAM: 5D CRISP'S REDMAN (CRISP RESPECT X REDMAN5'S LEGACY)



PB RIO CLOVER

Pine Brothers Longhorns, Luke Pine & Dave Pine



DOB: 4/28/2016 **PH#:** 602 **REG:** CI299016
BREEDING: Al'd to **Cowboy Tuff Chex** heifer sexed on 11/17/18. Live Cover by JH Ener-Chi from 12/2/18 to 1/30/19.

COMMENTS: This young heifer has proven horn producing genetics both on the top and bottom side of her pedigree. Her low rolling horns and brindle highlights are icing on the cake!

SIRE: JP RIO GRANDE (J.R. GRAND SLAM X TX W LUCKY LADY)
DAM: CLOVER (AMERICAN STAR X CINNAMON SPICE)



DC TROPHY

Crazy Cattle Company, Shawn & Seasons Pequignot



DOB: 7/16/10 **PH#:** 9/10 **REG:** CI269429
BREEDING: Heifer calf at side by **RC Tsunami 2**, born 5/16/19. Breeding to be announced.

COMMENTS: Trophy is a stand out cow. She is the first one visitors notice. She produced great calves with everything you could ask for. She measures 76.5" TTT and over 107" total. She has a heifer calf at side by **RC Tsunami**, this brings in the 84" TTT **Concealed Weapon** and 90" TTT **Horseshoe J Example** as well as **Pacific Mermaid** who has multiple 90" TTT offspring.

SIRE: DANCER CHEX (JP RIO GRAND X BL WIND DANCER)
DAM: TROPHY'S FIRST LADY (TROPHY X SR CREOLE'S FANCY)



No matter the angle



Trophy stands out above the rest

LOT 5 DC TROPHY DOB: 7/16/10

DANCER CHEX 807 X TROPHY'S FIRST LADY

HEIFER CALF AT SIDE Sired by RC TSUNAMI 2 DOB: 5/16/19



SHAWN & SEASONS PEQUIGNOT 717-577-3347 WWW.CRAZYCATTLECOMPANY.COM

6

CALAMITY JANE 02/16

Evergreen Haven Farms, Dustin & Jerri Martin



DOB: 3/6/16 **PH#:** 02/16 **REG:** 273391
BREEDING: Exposed to **CWR Rio Whiskey** 6/2/19 to sale date.
COMMENTS: Bring your best is what I'm told so here you go... Calamity Jane is from our very own breeding program and proudly wears the EH brand. She has the correct body and horn set. She measured 67" TTT at 3 years old, should be 70" at sale date, and should reach over 80" at maturity. Pedigree goes back to the famous Sittin Bull from the G&G program on the top and Superb from the Walnut Hill program on the bottom. She is exposed to the great 84.5" 2000+ lb CWR Rio Whiskey for a spring calf. This young cow will be a great foundation to add to any herd.
SIRE: LONE WOLF 452 (SITTIN BULL X 585 MARQUIS)
DAM: WH DAZZLE ME (WH SUPER SEEKER X WH B DAZZLED)

7

HORSESHOE J SPICE

Khaos Cattle Company, Ken & Jessica Morris



DOB: 10/17/14 **PH#:** 443 **REG:** CI297477
BREEDING: Exposed to **Rocketman** 12/8/18 to 2/28/19. Exposed to Cash Flow 5/26/19 to 8/1/19.
COMMENTS: Since Catchit is the best bull we have ever used, we are building our program around him. We are keeping 2 heifers out of this cow to replace her with. We are using this sale to promote our program. Here is your opportunity to take this nice cow home! Bred to our exciting young junior herd sire, **Rocketman**, who is 85" TTT.
SIRE: **COWBOY CATCHIT CHEX** (COWBOY CHEX X **BL RIO CATCHIT**)
DAM: HORSESHOE J FLAWLESS (KING OF CLUBS X J.R. SEQUENTIAL)

8

PATCHIT DESIGNER QUEEN

R&B Longhorns, Roy & Beth Landers



DOB: 9/20/11 **PH#:** 1 **REG:** C1280588
BREEDING: Exposed to 3P Eternal Tuff from 11/5/18 to 3/10/9.
COMMENTS: An own daughter of a **Rio Grande** X BL Patchit . This make Patchit Designer Queen similar to 95" TTT Rio Catchit . On the bottom side you go back to some foundation breeding with The Shadow. She's being exposed to 3P Eternal Tuff, a black and white son of \$165,000 102" TTT **Cowboy Tuff** , and out of the over 90" TTT **Shamrock Eternal Flame** (who's out of the 90" TTT **Eternal Tari**). Huge package.
SIRE: PATCHIT CHEX 713 (**JP RIO GRANDE** X BL PATCHIT)
DAM: RRR DESIGNING HEATHER (D6 OVERCAST X DESIGNING WOMAN)



FLASHING DESIGNING LADY B
5/6/18.
LAZY J'S BOUNTY HUNTER X
MF DESIGNER CHEXS MIX.



SERVICE SIRE- 3P ETERNALLY TUFF
11/16/15.
COWBOY TUFF CHEX X
97.875"TTT SHAMROCK ETERNAL FLAME.



PATCHIT DESIGNER QUEEN
9/20/2011.
PATCHIT CHEX X
RRR DESIGNING HEATHER.
BRED TO 3P ETERNAL TUFF.



ROY & BETH LANDERS - OWNERS
R: 618-292-3630 · B: 618-918-1074
WWW.RBLONGHORNS.COM · WWW.IRONSADDLERANCH.COM



WPR DO WA DADDY

White Pine Ranch, Scott & Sandy Hughes



DOB: 3/28/17 PH#: 7/7 REG: CI309781
BREEDING: Exposed to Rocketman 10 from 12/30/18 to 4/10/19.

COMMENTS: This one is a knockout. Just turned two years old. Easy going and a lot of horn. She will calve to our partnership bull, Rocketman, 86" TTT @ 3 years old. He is by Rim Rock. This heifer will make someone very happy!

SIRE: BULLETPROOF 33 (CV COWBOY CASANOVA X CV TIGER'S SPIRIT)
DAM: SDR TEJAS SPECIAL (TEJAS STAR X DH SPECIAL MEMORIES)



RZ ROYALTY OUT OF DRAG

R.E. Carroll Ranch, Richard Carroll



DOB: 11/18/10 PH#: 39/0 REG: CTI277209
BREEDING: RZ Walkin Tall from 5/31/19 to sale date.

COMMENTS: Royalty Out of Drag is a beautiful daughter out of the \$150,000 over 90" TTT Royal Reptuation and one of the most well know sires, upper 80" TTT Drag Iron. She is a large cow with 81" TTT on 1/21/19. She is bred to RZ Walkin Tall, an RZ Drifter son (by JP Rio Grande and out of the 100" TTT 1500lb RZ Temptress). Here's your chance to get some rare genetics that have not been offered on the East Coast.

SIRE: DRAG IRON (WS JAMAKIZM X SHINING VICTORY)
DAM: ROYAL REPUTATION (DIXIE RIVER X TEXAS TRISH FM276)



CR HOOKS CANDY CRUSH

FHR Longhorns, Dale Metz



DOB: 3/22/13 PH#: 12/3 REG: CI284434
BREEDING: Exposed to Jeremiah 29:11 from 1/10/19 to sale date.

COMMENTS: Candy Crush is a beautiful, solid big bodied young cow that just gave us a really stunning heifer out of KCCI Chromed that was so nice she was purchased before she was even weaned. She is a great mixture of old and new school genetics that you can build a future on. The lateral twisty horn completes the package. Being bred to Jeremiah the 2018 Horn Showcase and Futurity winner, that was also given a Superior bull award, and was 72" TTT at 24 months should make for a incredible calf.

SIRE: HUBBELLS CAPTAIN HOOK (JP RIO GRANDE X HUBBELLS MISS ANNIE)
DAM: ZUZANA (MILE MARKER X ZHI-BARETTA)

FHR LONGHORNS
A VETERAN OWNED COMPANY

94.625" TTT
AT 25
MONTHS



The Next Generation Of Greatness!

HORN SHOWCASE BRONZE ★ 1ST PLACE FUTURITY ★ SUPERIOR BULL AWARD

HUBBELLS JEREMIAH 29:11

COWBOY CATCHIT CHEX X HUBBELLS CW BEAUTY | DOB: 5/13/17 | 94.625" TTT AT 25 MONTHS

CONVENTIONAL & 4.0 HEIFER SEXED SEMEN WILL BE AVAILABLE AT THE HORN SHOWCASE

START YOUR
LONGHORN
JOURNEY
TODAY!



REGISTERED
TEXAS
LONGHORNS

WE WOULD BE HONORED TO START YOU ON YOUR LONGHORN JOURNEY WITH SHOW ANIMALS, A QUALITY BREEDING PROGRAM, OR JUST SOME GREAT LAWN ART. CHECK OUT OUR WEBSITE TO SEE OUR HERD.

DALE METZ AND DECARLO NOBLE | 940-367-0472 | DMETZ72@VERIZON.NET | WWW.FHRLONGHORNS.COM

**CHURCH VIEW
CATTLE CO.**



**WHAT
DIRECTION
ARE YOU
HEADED?**

Look at those lateral horns!!



CVCC BOMBERS BABE

LOT #13

DOB: 5/13/16 | 65.5" on 5/25/19
DUNN GUN BOMBER x D/O CHROME'S BARBIE



SERVICE SIRE: 5D AXMAN

Mike & Shirley Thiel

W4933 CTY. RD. G - BLACK CREEK, WI 54106 | 920-595-0336
MSTHIELS@CENTURYTEL.NET • WWW.CHURCHVIEWCATTLE.COM



**SLEEPY HOLLOW
LONGHORNS**

WWW.SLEEPYHOLLOWLONGHORNS.COM



PACIFIC JESTER



RHF CASANOVA COWBOY



TCC RIO BEAUTY



LOT #17
EAST COAST CLASSIC
LONGHORN SALE

DOB: 5/30/2012

JP RIO GRANDE X EOT OUTBACK BEAUTY



AI'D TO SAM CHEX - HEIFER SEXED SEMEN
JOAQUIN X BL SADIE
'17 & '18 HORN SHOWCASE TTT CHAMPION

\$165,000 EOT OUTBACK BEAUTY GENETICS
BOOMERANG C P X SOUTHWIND 8/21
THAT ARE CONSISTENT & PREDICTABLE

J&J LONGHORNS

JOHN G. KING PORT ROYAL, PA 717-953-7449 JGLENK@GMAIL.COM
WWW.JANDJLONGHORNS.COM

12

HL FIREFLY'S GLORY

Rolling Horns Ranch, Austin & Taylor Rohr



DOB: 2/20/13 **PH#:** 12/13 **REG:** CI283237
BREEDING: Exposed to **Big Red HR** from 1/1/19 to sale date.

COMMENTS: OCV'd. Here is your chance to take home a young 80" daughter of Dupree Chex. Take a look at her pedigree and you will see greats like **Poco Lady**, **JP Rio Grande**, **Starlight** and Phenomenon. She has been a great one for us and we wanted to put something from the top of our herd in the East Coast Classic. To top it all off we have her bred to **Big Red HR** to throw in Grand Slam and the Great LLL Rosemary cow. Don't let Firefly pass you by! She will be sure to light up your herd. Measurements and pregnancy status announced on sale date.

SIRE: DUPREE CHEX (**JP RIO GRANDE** X **POCO LADY BL**)
DAM: ZD ROCKS 585 FIREFLY (ROCK STAR X 585 FIREFLY)

13

CVCC BOMBER'S BABE

Church View Cattle Co, Mike & Shirley Thiel



DOB: 5/13/16 **PH#:** 16/2 **REG:** 273424
BREEDING: Exposed to 5D Axman from 5/15/19 to 9/10/19.

COMMENTS: Bomber's Babe is a fancy, well balanced daughter of the 87" TTT **Dunn Gun Bomber**. Babe's dam is a JBR Chrome which brings in HCR Blood. She's exposed to the 4x Futurity Winner, 5D Axman. This nice lateral horned cow is one to take home.

SIRE: **DUNN GUN BOMBER** (**BOMBER CHEX 80** X DUNN GUNNER)
DAM: D/O CHROME'S BARBIE (JBR CHROME X EOT SENSOR'S BARBIE)

14

RIO REGINA SRC

Circle Double C Ranch, Chris & Christina Clark



DOB: 4/26/14 **PH#:** 8/4 **REG:** CAI290028
BREEDING: Exposed to **Big Red HR** from 7/1/18 to 12/23/18.

COMMENTS: OCV'd. A daughter out of the \$100,000 **CV Cowboy Casanova** with her whole life ahead of her. If that doesn't get you excited, take a look at the bottom side of her pedigree. **JP Rio Grande**, Coach, and the great **Night Safari**. Regina is bred for greatness and is carrying some of the most sought after genetics in the industry all in one package. To top it off, she is bred to **Big Red HR** for what we think is going to be an amazing calf! Don't miss out on her. Pregnancy and measurements announced on Sale Day.

SIRE: **CV COWBOY CASANOVA** (COWBOY CHEX X SMOKY ROAN)
DAM: BL RIO SAFARI (**JP RIO GRANDE** X **BL COACH SAFARI**)

BIG RED HR

SERVICE SIRE TO LOTS 14 & 37



DOB: 3/9/12 | J.R. GRAND SLAM X LLL ROSEMARY



LOT #14

RIO REGINA SRC
DOB: 4/26/14
CV COWBOY CASANOVA X BL RIO SAFARI



LOT #37

DC BARBIE
DOB: 10/11/15
COWBOY CHEX X BARBIE'S CALIBER



CIRCLE DOUBLE C RANCH | CHRIS & CHRISTINA CLARK
361-816-6007 | CIRCLEDDOUBLECRANCH@YAHOO.COM
WWW.CIRCLEDDOUBLECRANCH.COM

15

PS TIARA BEAUTY

Albanese/Wachter Partnership, Mike & Ellen Albanese Jay/Suzi Wachter



DOB: 12/15/12 **PH#:** 302 **REG:** CAI287522
BREEDING: Exposed to TCC Blackjask Bandit from 5/5/18 to 1/1/19.

COMMENTS: This is a huge bodied **Top Caliber** daughter with that great twist going on. Many folks talk about crossing hot genetics with foundation, well Phenomenon is on her papers. She's got great body to her, perfect udder, wonderfully calm disposition. She's been exposed to TCC Blackjacks Bandit, bringing in **Rio**, Hatches Candy Cane (dam of \$80,000 **Awesome Teardrop** and \$170,000 **SDR Candy Cane**), Cowboy Chex, **ZD Kelly**, Awesome Viagra. Can't miss here.

SIRE: **TOP CALIBER** (HUNTS COMMAND RESPECT X HASHBROWN)
DAM: CWR PHENOMENAL WHIMSY (M ARROW JUST WHISTLE X PCC MISTIC)

16

RRR MISS LUCKY LADY 056

Triple-R-Ranch, Dick Lowe



DOB: 6/6/10 **PH#:** 056 **REG:** 255886
BREEDING: Exposed to RRR Jagizm's Edge 095 11/10/18 to 8/10/19.

COMMENTS: RRR Miss Lucky Lady 056, is a real nice big, solid, young cow with lots of potential. She is bred to RRR Jagizm's Edge who is a son of **WS Jamakizm** and his Dam is RB Favorite Queen out of Phenomenon. Her Dam is Hubbells Rio Luckey a JP Rio Grande daughter. We have got some great daughters out of her. Check us out at (rrrlonghorns.com) She is Millennium Futurity eligible.

SIRE: TEJAS STAR (STARLINER X DELTA VAN HORNE)
DAM: HUBBELLS RIO LUCKEY (**JP RIO GRANDE** X HUBBELLS I LUCKY LADY)

17

TCC RIO BEAUTY

J&J Longhorns, John King



DOB: 5/30/12 **PH#:** 222 **REG:** CAI281631
BREEDING: AI'd to **Sam Chex** with heifer sexed semen.

COMMENTS: Rio Beauty is a cow that has the whole package. She's built right, she's got the pedigree, and she's a producer. On the top side you have **Rio Grande** and on the bottom you have the once world record \$165,000 **EOT Outback Beauty**. She will be AI'd this summer and updates will be sent out before the sale.

SIRE: **JP RIO GRANDE** (J.R. GRAND SLAM X **TX W LUCKY LADY**)
DAM: **EOT OUTBACK BEAUTY** (BOOMERANG C P X SOUTHWIND 8/21)

TRIPLE R RANCH**Lot#: 16****RRR Miss Lucky Lady 056**

DOB: 6/6/10
TEJAS STAR X
HUBBELLS RIO LUCKEY



EXPOSED TO RRR JAGIZM'S EDGE 095
WS JAMAKIZM x RB FAVORITE QUEEN
DOB: 11/16/10

Dick Lowe

dick@lowecon.net | www.rrrlonghorns.com

18

TWISTY CRISP

Bilgrien Cattle Company, Dave Bilgrien



DOB: 9/28/11 **PH#:** 401 **REG:** C1287897
BREEDING: Exposed to 2nd Amendent from 4/15/19 to sale date.

COMMENTS: Here's a nice daughter out of the mid 80" TTT **Crisp Respect** out of VV Camelot Twist who produced the \$21,000 over 80" TTT **Sittin Dove** and measures over 75" TTT herself. She's bred to 2nd Amendment who's a son of the 6x undefeated Futurity winner, **Delta Lucky Ace** (whose full sister sold for \$61,000) and out of a Jimmy Jones bred **Fifty-Fifty BCB** daughter, Spectacular Feat (whose half sister sold for \$78,000). Wonderful little package here with a ton of marketing power.

SIRE: **CRISP RESPECT** (HUNTS COMMAND RESPECT X CRISP)
DAM: VV CAMELOT TWIST (WATSON 201 OSCAR GALLOWAY X BRINK KRISTY EAGLE)

19

CRR CASH ME OUTSIDE

Cedar Rock Ranch, Joel & Rebecca Miner



DOB: 3/11/18 **PH#:** 5/18 **REG:** 280525
BREEDING: Sells unexposed.

COMMENTS: A well-built, easy going heifer with several greats in her pedigree. Her sire, Outsider, goes back to **Concealed Weapon** and **RC Pacific Mermaid**. On the bottom side, she is out of an easy-going, color producing cow who goes back to the greats Boomerang and Hunts Command Respect. Left unexposed to breed to the bull of your choice. Updated measurement at sale.

SIRE: OUTSIDER (**CONCEALED WEAPON** X **RC PACIFIC MERMAID**)
DAM: RESPECT ME TOMORROW (HUNTS MOST RESPECTED X AWESOME CHARLI)

20

XC HEIDI

Craft/Gravett Partnership, Les and Lane Craft & Ann Gravett



DOB: 4/30/12 **PH#:** 12/4 **REG:** CT1285526
BREEDING: Exposed to **Sniper** from 6/25/19 to sale date.

COMMENTS: A gorgeous 82.75" TTT 1200lb cow out of the 90" TTT **RM Touch N Whirl PAT** going back to Touchdown of RM who produced the over 90" TTT \$100,000 **RM OK Lady PAT**. If you like bottom side cow power you'll love this cow. On the top side **Rio** should need no introduction. This cow has a great udder and has done a wonderful job raising calves for us. Her last heifer sold months before weaning. She's quiet, easy going, and a pleasure to have around. She's being bred to our upper 80" TTT black and white **Sniper** bull. This cow will stop more people than a dead man, put her in your pasture and find out.

SIRE: **JP RIO GRANDE** (J.R. GRAND SLAM X TX W LUCKY LADY)
DAM: **RM TOUCH N WHIRL PAT** (TOUCHDOWN OF RM X RM MISS WHIRLWIND)

Pretty Sells



XC RIO HEIDI

DOB 4/30/12

JP RIO GRANDE X RM TOUCH N WHIRL PAT
 82.75" TTT. BRED TO SNIPER.

LOT #20 AT THE EAST COAST CLASSIC LONGHORN SALE
 SEPTEMBER 13 & 14, 2019



SERVICE SIRE- SNIPER- 2/23/12
 RHf SHARP SHOOTER X KC WINTER QUEEN
 86"TTT. OWNED WITH DEBBIE BOWMAN



DAUGHTER- HEIDI OUTLAWED- 3/31/17
 62"TTT ON 5/31/19
 OWNED BY RANDY ALVAREZ



DAM- RM TOUCH N WHIRL PAT
 4/22/2005
 91.5"TTT.

ANOTHER GREAT CRAFT/GRAVETT PARTNERSHIP

Craft Ranch

Lane Craft Houston, TX 77011
 Ranch: (281) 732-3438
 E-mail: Crafranchlonghorns.lane@gmail.com
www.crafranchlonghorns.com

G&G LONGHORNS

Ann Gravett, Rochelle, VA 22738
 Ranch Manager: Bear Davidson ~ Cell (540) 687-0050
 E-mail: beardavidson@gmail.com
www.gandglonghorns.com



ANGEL EOT
Leonard Ranch, Tyson Leonard



DOB: 7/31/16 **PH#:** 650 **REG:** CI307655
BREEDING: Exposed to Tuff it Out from 8/1/18 to 11/1/18.
Exposed to HL Double Barrell from 6/15/19 to 9/1/19.

COMMENTS: Angel sells exposed for her first calf to Tuff It Out that I co-own with Scott Hughes. Tuff it Out is a son of **Cowboy Tuff** and Winning Smile by Winchester. He has excellent horn and gain data. I purchased Angel from Debbie Bowman. This is a nice heifer that will sure be an asset to any Longhorn program.

SIRE: HOT PLAYBOY (HOT SPOTS 7 X JP GRAND ANNE)
DAM: ANGEL FROM ABOVE (RIO PECOS TEXA X GRAND ANGEL)



CDC SAFARI KATE
Rockin' AF Ranch, Vasut Family



DOB: 12/20/15 **PH#:** 1215 **REG:** CI309649
BREEDING: Heifer calf at side by Voodoo Cowboy, born 4/19/15.
exposed to Cruzin Tango Chex from 5/1/19 to 9/1/19.

COMMENTS: OCV'd. Here is your chance to own a beautiful young cow with an amazing horn set. She has a knockout pedigree going back to **Night Safari** and JP Grand Kate. To top it off she has a heifer calf at side sired by our bronze and futurity winning Cowboy Catchit son, Voodoo Cowboy. We have her exposed back all summer to the Loomis bred bull Cruzin Tango Chex to throw in the sought after **Fifty-Fifty BCB** genetics. Help yourself here, she comes from the heart of our program!

SIRE: RIO SAFARI CHEX 788 (JP RIO GRANDE X NIGHT SAFARI BL833)
DAM: SDR RIOS KATE (JP RIO GRANDE X SDR KATHERINE)



CERSEI DE PALO PINTO SRC
Lonesome Pines Ranch, John and Christy Randolph



DOB: 9/4/12 **PH#:** 92/2 **REG:** 278261
BREEDING: Exposed to Pearl Snap BCB from 8/26/18 to 7/01/19.

COMMENTS: Heavy bred to Pearl Snap BCB (a son of Bandera Chex). Will very likely be a 3-n-1 package. In January 2019, she measured 74.5" TTT with horns still going out, and yet holding a very nice shape. We will provide a current measurement at sale and also pregnancy status. She's a well made **Rio Grande** daughter and on the bottom side goes back to Iron Mike and Hunts Command Respect. Really hard to let this gentle cow go!

SIRE: JP RIO GRANDE (J.R. GRAND SLAM X TX W LUCKY LADY)
DAM: 7LS MISS GAMBLER (IRON MIKE ST X 7LS RENO)



LOT #22 CDC SAFARI KATE
DOB: 12/20/15
RIO SAFARI CHEX 788 X SDR RIOS KATE
HEIFER AT SIDE BY VOODOO COWBOY



ROCKIN' AF LONGHORNS | THE VASUT FAMILY

512-917-8654 | ROCKINAF LONGHORNS.COM

CHASE VASUT
Hauling & Sale Management
CALL 512-917-8654



RIVERFORKS T-TIME

TK Longhorns, Terry & Tammy King



DOB: 10/15/14 **PH#:** 104 **REG:** C1295767
BREEDING: Exposed to Tuff Enuff Chex BCB from 9/29/18 to 2/11/19. Exposed to Fifty-Fifty BCB from 2/11/19 to 6/1/19.
COMMENTS: Really nice cow out of the great Cowboy Catchit Chex bull. Maybe the best producing bull in the industry today. I am keeping a Bubba Tuff Chex daughter that's really nice.

SIRE: COWBOY CATCHIT CHEX (COWBOY CHEX X BL RIO CATCHIT)
DAM: DLM LILLY T (SHILOHS THUNDERHEAD 443 X VV TIGER LILY)



PACIFIC JESTER

Sleepy Hollow Longhorns, Mac & Holly Stewart



DOB: 2/21/13 **PH#:** 309 **REG:** 265956
BREEDING: Exposed to RHF Casanova Cowboy 10/8/18 to 4/1/19.
COMMENTS: Jess is a big bodied, beautiful girl with a ton of total horn. She measured 78" TTT on 5/1/19. She produces a big nice calf every year, is an excellent mother and milker. She is easy to work and laid back in the pasture. If you are looking for the total package with an incredible pedigree to add to your breeding program this is it! Don't let this awesome opportunity pass by!

SIRE: DANCER CHEX 807 (JP RIO GRANDE X BL WIND DANCER)
DAM: TJ KYLIE'S KLOWN (SHREK CHEX X LLL SNUGGLY)



FLASHY DESIGNING LADY B

R&B Longhorns, Roy & Beth Landers



DOB: 5/6/18 **PH#:** 518 **REG:** C131194
BREEDING: Sells unexposed.
COMMENTS: Here's a nice young heifer going back to the next 90" bull Lazy J's Bowhunter and big brindle Justice, Sedlacek used so well. On the bottom side you have a daughter going back to Rio Grande x BL Patchit, this is the same breeding as The 95" TTT Rio Catchit who produced the \$165,000 102" TTT Cowboy Tuff. You want to breed with genetics that step up your program, do it in one step with this heifer.
SIRE: LAZY J'S BOUNTY HUNTER (LAZY J'S BOWHUNTER X LAZY J'S JUST PRISSY)
DAM: MF DESIGNER CHEXS MIX (PATCHIT CHEX 713 X RRR DESIGNING HEATHER)



RIVERFORKS T-TIME
LOT 24 - EAST COAST LONGHORN CLASSIC



DOB 10/15/2014
COWBOY CATCHIT CHEX x DML LILLY T
STUNNING LONGHORN OUT OF THE GREAT COWBOY CATCHIT CHEX. BRED TO TUFF ENUFF CHEX BCB.
BEAUTIFUL PRODUCER. COLOR. CONFORMATION. THIS IS A TOTAL PACKAGE COW!

Terry & Tammy King TK Longhorns 1955 Sherwood Ln Westville, FL 32464 850-299-6875

27

RFR DELUGE'S GIRL

Flying H Cattle Company, Todd Hensley



DOB: 8/1/11 PH#: 041 REG: CI279735
BREEDING: Exposed to Grande Safari Chex from 5/15/19 to sale date.

COMMENTS: She's a beautiful big cow, a proven producer and a great milker. She measures 66" TTT.

SIRE: RRR JAGGED EDGE 616 (WS JAMAKIZM X RRR MISS GUNMAN 313)
DAM: 585 DELUGE (COOPER'S TORO X JOEY GIRL R-G)

28

MM MISS GRAND SAFARI

M&M Cattle Company, Mark & Misty Flinchum



DOB: 4/17/15 PH#: 51 REG: CI298760
BREEDING: Exposed to The Profit from 6/27/18 to 4/1/19.

COMMENTS: Miss Grand Safari was 72.25" TTT fall of 2018. Her dam is apporaching 90" TTT and turns 8 in January 2020 and may be the longest horned Safari BL Chex daughter. She also has Night Safari, RRR Miss Jitter Z and SL Selan's Ace to name a few great cows in her peidgree. She is bred back to The Profit to add 10 bulls over a ton and 10 cows over 80" TTT. Her 2 year old by THE PROFIT measured mid 50" TTT at 2 but now may be our fastest gorwing heifer. Thanks for your consideration of Miss Grande Safari. Updated info day of sale.

SIRE: HELM GRAND ACE (JP RIO GRANDE X SL SELENA'S ACE)
DAM: MM MISS GUNSMOKE SAFARI (SAFARI BL CHEX X RRR MISS JITTER Z 817)

29

OVERDRESSED

Sky Ranch Texas Longhorns, Cathy Hawke



DOB: 4/7/14 PH#: 269128 REG: 108/4
BREEDING: Bred to Cut N Dried from 6/18 to 9/18. Preg positive. Calf pending. Exposed to Drop Box from 6/15/19 to sale date.

COMMENTS: Exciting and rare 3 in 1 opportunity! Overkill daughter of exceptional beauty and quality; Excellent mother. Produced 4 beautiful, colorful quality heifers. Dob 4/7/14. Sells with outstanding Cut'n Dried heifer at side. Exposed to Drop Box for an incredible 3-in-1 opportunity have top calves by top bulls. OCV'd. Preg status announced at sale.

SIRE: OVERKILL (OVERHEAD X FIELD OF PEARLS)
DAM: TOP CONTEST (TOP CALIBER X DANCE CONTEST)

MM
C C

M&M CATTLE COMPANY
MARK. MISTY. MADISON, LANE AND LOGANN FLINCHUM

MM
C C



LOT #28
MM MISS GRAND SAFARI
DOB: 4/25/17
HELM GRAND ACE X
MM MISS GUNSMOKE SAFARI
(ALMOST 90" TTT)
72" TTT AS A 3 YEAR OLD
EXPOSED TO THE PROFIT

THE
PROFIT

DRAG IRON X JAMELLE
DOB: 5-3-15
80.25" TTT ON HIS
4TH BIRTHDAY

LOT #36
MM HER PROFIT IS SECRET
DOB: 4/13/2017
THE PROFIT X
MM MISS GRAND SECRET
OVER 50" TTT BEFORE
2 YEARS OLD



MM MISTYS PROFIT DARLING
THE PROFIT X MM MISS GRAND SAFARI
DOB 4-25-17 | CLOSE TO 60" TTT



LOT 36'S HEIFER CALF AT SIDE
HE'S PRETTY TUFF (OVER 80" TTT)
X HER PROFIT IS SECRET

CELL (540) 986-5544 | HOME/WORK (540) 929-4426
WWW.MANDMCATTLECOMPANY.COM

30

SHAMROCK BEAUTY QUEEN

Shamrock Valley Ranch, Jim & Barb Steffler



DOB: 3/31/16 **PH#:** 160 **REG:** CI304090
BREEDING: Exposed to Reagan Texa 9/15/18 to 1/15/19.
Exposed to Pistol Packer 2/1/19 to 6/1/19.
COMMENTS: This heifer got her name for a reason. She's down right gorgeous! From the day she was born she was the center of attention. As she matured, we realized her horn set was special too. Not only is she great to look at but she reproduced it with her first calf, a heifer we are retaining that is colored just like her mama. The horn set too! Sired by the great horn producer "Sniper" from the "Top Caliber" Line, she also has Rio, Butler and Tari Graves genetics. Beauty Queen has been palpated bred to our young herd sire, Reagan Texa. Reagan measured 39.25" TTT at 12 months old!!! He is sired by **Concealed Weapon** bringing in the 90" TTT **Horseshoe J Examaple** cow on the top side and he is out of the great producing Shamrock 2Spot Van Horne, who is out of the World Champion Cow, Texana Van Horne over 88" TTT the longest true black cow in the breed to my knowledge. Beauty Queen is a wonderful Heifer.
SIRE: **SNIPER (RHF SHARP SHOOTER X K.C. WINTER QUEEN)**
DAM: **FOXY LUCILLE EOT 358 (FOX CHEX X HL LUCKY LUCILLE)**

31

SIESTA TIME

Rolling D Ranch, Nancy C Dunn



DOB: 10/10/12 **PH#:** 239 **REG:** CI288668
BREEDING: Exposed to Dunn Esquire from 10/22/18 to 6/7/19.
COMMENTS: Beautiful Twisty horned parker brown cow bred by Jimmy Jones. She changes colors with the seasons, consistent breeder and great milker. She has had four calves that have all made nice colorful trophy steers. Currently bred to Dunn Esquire, an outstanding **Fifty-Fifty BCB** son, for a fall calf. It's time for a HEIFER! Will be Johnes tested.
SIRE: **BOMBER CHEX 80 (JP RIO GRANDE X BL PRETTY BOMER)**
DAM: **J.R. SIESTA (J. R. FANCY X J.R. SISTER)**

32

WPR MARGIES BROWN SUGAR

Hatcreek, Arlan & Elizabeth Bush



DOB: 8/1/15 **PH#:** 6/3 **REG:** CI302859
BREEDING: Exposed to HL Hang Em High from 12/27/18 to 9/1/19.
COMMENTS: OCV'd One of the best mama cow's we have had the pleasure to own. Gentle, easy keeper, good milker and has beautiful brindle color to boot. Raises a great calf every year. Hard to part with her....don't miss out on her as she will be a great addition to your herd. And to top it off her sire is a **Fifty-Fifty BCB** son.....and bred to Hang em High, a Chisholm son.
SIRE: **PROFIT MARGIN (FIFTY-FIFTY BCB X OVER THE TOP 65)**
DAM: **TP BROWN SUGAR (GRAND DESIGN 11/5 X HOT LADY 10/3)**

PARTNERSHIPS AVAILABLE



EAGLE TEXA 86.75" TTT @ 49 MONTHS OLD



EAGLE TEXA CLOSING IN ON THE 90" MARK
SIRE BY THE GREAT COWBOYTUFF CHEX
EAGLE TEXA IS TALL AND LONG, WEIGHING
OVER 1,500LBS AT 3 YEARS OLD. TWIST,
CONFORMATION, COLOR, PEDIGREE, GREAT
DISPOSITION. EAGLE TEXA IS THE TOTAL PACKAGE!



EXTREME COW POWER
SHAM ROCK MY WORLD, TEXANA VAN HORNE,
DELTA VAN HORNE, DELTA VIXEN, DELTA SISSIE,
STARLIGHT, BL RIO CATCHIT, DARK STAR
ALL IN 1 UNMATCHED SPECTACULAR PEDIGREE

SHAMROCK VALLEY RANCH
JIM STEFFLER | 586-839-6217 | SHAMROCKVALLEYRANCH@GMAIL.COM

**NEW
THIS YEAR!**



WHAT'S THE WEANING PEN?

It's where all the kids go! We value the family side of this industry so much. Between Ann when her kids were little at sales, and myself as the little boy running around events, Shawn's kids seemly growing up at these sales, it's been important to us to keep these kids involved. You'll see a ton of kids running around at our sales and ranch events. We love that. Ann had this idea to make them their own area. So this year they'll have that at the East Coast Longhorn Classic.

A very special thank you to Brandy & Ryan Schmidt of Rocky Meadow Longhorns for sponsoring the Weaning Pen. The reason this event is so successful is because the market sees it as a value. And for that we thank you more than you'll know.

There are some great things happening for the future of this breed at the East Coast Longhorn Classic. Don't miss it.

M I D D L E T O W N , P E N N S Y L V A N I A



PEDIGREES & PRODUCTION



RM AWESOME PAT 569 - DOB: 6/11/2009
TOUCHDOWN OF RM X AWESOME EMILY



RIO LIZA PC12 - DOB: 11/30/2012
JP RIO GRANDE X AWESOME LIZA PC254



BETTY'S IMAGE - DOB: 4/3/2016
SITTIN BULL X BETTY ZANE



PROUD SPONSOR
OF THE 2019
EAST COAST
LONGHORN CLASSIC!

**WITH THE GENETICS COMING OUT OF FIFTY-FIFTY BCB,
HUBBELLS 20 GAUGE, HILL 5 SULLY & SNIPER, WE ARE
RAISING LONGHORNS TO BE PROUD OF IN OUR HERD - OR YOURS.**

ROCKY MEADOW LONGHORNS - RYAN & BRANDY SCHMIDT

2505 BRINSER ROAD MIDDLETOWN, PA 17057 (RYAN) 717-805-1831 (BRANDY) 717-514-5933 SCHMIDTR98@GMAIL.COM

33

WS VINDICATOR X RRR MISS HOT STUFF EMBRYO

Home Branch Ranch, Ricky McLeod



COMMENTS: Here's a wonderful opportunity to get a gorgeous cross. **WS Vindicator** sold for \$100,000, he brings in the total outcross of 80" TTT+ **WS Jamakizm**, 90" TTT **ECR Eternal Tari** on the top side. On the bottom side you have the 90" TTT **WS Sun Star** out of the **WS Sun Rise** cow. **RRR Miss Hot Stuff** is in the mid 80s and is the largest Roundup daughter know. She's a HUGE cow. On top of that your embryo comes with this registered cow, big bodied, tons of horn. Here's your chance to get in on the ground level.

SIRE: **WS VINDICATOR** (AUSTIN TEXA 260 X **WS SUN STAR**)
DAM: **RRR MISS HOT STUFF** (ROUNDUP X CAHILLS HOT FANCI)

34

RRR MISS STARIE 090

Khaos Cattle Company, Ken & Jessica Morris



DOB: 10/17/10 **PH#:** 090 **REG:** CT294456
BREEDING: Exposed to **Cowboy Catchit Chex** from 3/3/19 to 4/26/19. Exposed to **Cash Flow** from 5/26/2019 to 8/1/2019.

COMMENTS: Successful breeding requires a strong foundation. Miss Starie is a perfect example. She combines Tejas Star with Phenomenon and Classic. We are keeping a heifer out of Monika Sun and one out of Catchit so we can make her available to you.

SIRE: TEJAS STAR (STARLINER X DELTA VAN HORNE)
DAM: RB FAVORITE QUEEN (PHENOMENON X 3S FAVORITE BEAUTY)

35

MRL BACK N BLACK

E&L Texas Longhorn Farms, Jerry Loveday



DOB: 10/21/14 **PH#:** 26 **REG:** CI296345
BREEDING: Exposed to **Gunner EOT** from 10/1/18 to 10/15/18.

COMMENTS: DNA color tested UC Davis to be dominant back and dominant wild gene. This cow will produce color no matter what bull you use. She has produced a homozygous black heifer and a homozygous parker brown bull.

SIRE: JP GRAND MARSHAL (J.R. GRAND SLAM X JKC ROANCIE)
DAM: IN THE BLACK (MILE MARKER X JUST SCORE)

MM HER PROFIT IS SECRET

M&M Cattle Company, Lane Flinchum

36

DOB: 4/13/17 **PH#:** 73 **REG:** CI309065
BREEDING: Heifer calf at side by **He's Pretty Tuff**, born 5/29/19.

COMMENTS: Lane wanted to bring his best with his FIRST consignment. Look at the cow power in her pedigree. **Night Safari**, **Jamelle**, **SL Selena's Ace**, **BL Coach Safari**, **BL Painted Safari**, and with the heifer calf at side you're adding **BL Rio Catchit**, **BL Rio Pretty**, **BL Pretty Woman**, and **Working Woman** just to name a few. 10 bulls over a ton with 10 over 80" TTT cow, the heifer calf has over 16 80" TTT animals. Updated info on sale day but was over 50" TTT @ 24 months old.

SIRE: THE PROFIT (**DRAG IRON** X **JAMELLE**)
DAM: MM MISS GRAND SECRET (HELM GRAND ACE X WPR FLIP FLOP)

**DC BARBIE**

Circle Double C Ranch, Chris & Christina Clark

37

DOB: 10/11/15 **PH#:** PENDING **REG:** PENDING
BREEDING: Exposed to **Big Red HR** from 7/1/18-12/23/18.

COMMENTS: OCV'd. Here is your chance to own a half sister of the longest horned bull in the breed and out of one of the best producing female lines in the Industry. **DC Barbie** is bred for greatness. Just take a look at the production on the bottom side of her pedigree. Her mother was on her way to 90" before she passed away young. There is no guess work here. She is bred to **Big Red HR** to throw in the magic cross of **HCR** and **Grand Slam** genetics. This is a big time package for sure. Measurements announced on sale date!

SIRE: COWBOY CHEX (PEACEMAKER 44 X **BL POCO BUENO**)
DAM: **BARBIE'S CALIBER** (**TOP CALIBER** X **EOT OUTBACK BARBIE**)

**RRR MISS GRETA 238**

Rolling Horns Ranch, Austin & Taylor Rohr

38

DOB: 5/26/12 **PH#:** 238 **REG:** CI299285
BREEDING: Bull calf at side by **Big Red HR**, Born 2/12/19. Exposed to **Big Red HR** from 1/1/19- to Sale Date.

COMMENTS: OCV'd. A beautiful black and white cow who is almost to the 80" mark. She comes straight out of Dick Lowe's program and goes back to industry greats such as **Night Safari** and **Grand Slam**. They don't make them much prettier than her. She has a bull calf at side by **Big Red HR** and is exposed back the same way! Pay attention here. She is not one you want to miss! Pregnancy and measurements announced on sale day.

SIRE: HIDALGO CHEX (COACH X **NIGHT SAFARI BL833**)
DAM: RRR MISS GYPSY SLAM 939 (J.R. GRAND SLAM X GUNFIRE 368)



39

BL LEZAWÉ 209

White Pine Ranch, Scott & Sandy Hughes

**DOB:** 6/30/12**PH#:** 209**REG:** CI282916**BREEDING:** Bull calf by **Cowboy Catchit Chex**, born 6/3/19. Exposed to **Cowboy Catchit Chex** from 4/15/19 to 9/15/19.**COMMENTS:** This is a great young cow that can take your program to the next level. The genetics of this cow is highly sought after. The Lezawe cow was one of the very best. Bid with confidence. You will love her 3-in-1 with a **Cowboy Catchit** bull at side and bred back.**SIRE:** **SAMSON 26** (HUNTS COMMAND RESPECT X FROSTY DIAMOND)**DAM:** RIO LEZAWÉ EOT 9E3 (**JP RIO GRANDE** X TABASCO'S LEZAWÉ)

40

LP NINA

FHR Longhorns, Dale Metz

**DOB:** 1/3/12**PH#:** 28**REG:** CI282081**BREEDING:** Pasture bred to Jeremiah 29:11 from 1/1/19 to present.**COMMENTS:** A great young cow with JR Grand Slam, the Shadow, and Emperor genetics to build on. Beautiful horn growth, great conformation, gentle temperament and she's the classic Longhorn red brindle and white. She will come confirmed bred to Jeremiah 29:11 our great young herd sire that was a Horn Showcase and Futurity Champion along with a Superior bull award. He was 72" TTT at 24 months and is a **Catchit Chex** son to add to his value as a breeder. There is little question this pair will make an outstanding calf to add to your program. Current TTT, Total Horn and expected calving date will be announced at the sale.**SIRE:** LP SOMBRAH (THE SHADOW X LP TURBO'S LENA)**DAM:** AWESOME NINA (J.R. GRAND SLAM X NICO LEGACY)

41

HBR TALL REPUTATION

Home Branch Ranch, Ricky McLeod

**DOB:** 1/26/17**PH#:** 725**REG:** CI308236**BREEDING:** Exposed to HL Front N Center from 6/2/19 to Sale Date.**COMMENTS:** She comes from Richard Carroll's breeding program. Top to bottom, she's a knock out. She's been exposed to Front N Center, our partnership bull with Hudson Longhorns, a son of **WS Vindicator** and the 90" TTT **Casino Ace** cow. You can't go wrong with this one.**SIRE:** **RZ WALKIN TALL** (**RZ DRIFTER** X **RZ TEMPTRESS**)**DAM:** RZ JOSEY'S REPUTATION (**RZ JOSEY WALES** X RZ SLEDGE HANNA)

UPCOMING EVENTS

HUDSON/VALENTINE FORT WORTH SALE

SEPT 20-21 | FORT WORTH TX

TLBAA HORN SHOWCASE

OCT. 3 | LAWTON, OK

LONGHORN LEGACY SALE

MARCH 20-21 | DALLAS, TX

CONTACT CHASE VASUT AT 512-917-8654
OR BEAR DAVIDSON AT 540-687-0050

THE BLUE RIDGE SALE

APRIL 10 | LLANO, TX

THE CHERRY BLOSSOM SALE & FUTURITY

APRIL 17-18 | CULPEPPER, VA

CONTACT CHASE VASUT AT 512-917-8654
OR BEAR DAVIDSON AT 540-687-0050

RED MCCOMBS FIESTA SALE

MAY 1 | JOHNSON CITY, TX

***BOLD EVENTS INDICATE THE NEW LONGHORN LEGACY GROUP EVENTS**

42

LITTLE BIT O HONEY

Pine Brothers Longhorns, Luke Pine



DOB: 3/1/11

PH#: 103

REG: CI275709

BREEDING: Heifer calf at side by JH Ener-Chi, born 5/12/19.
Exposed to **Hubbells Butch Cassidy** from July 15 to Sale Date.

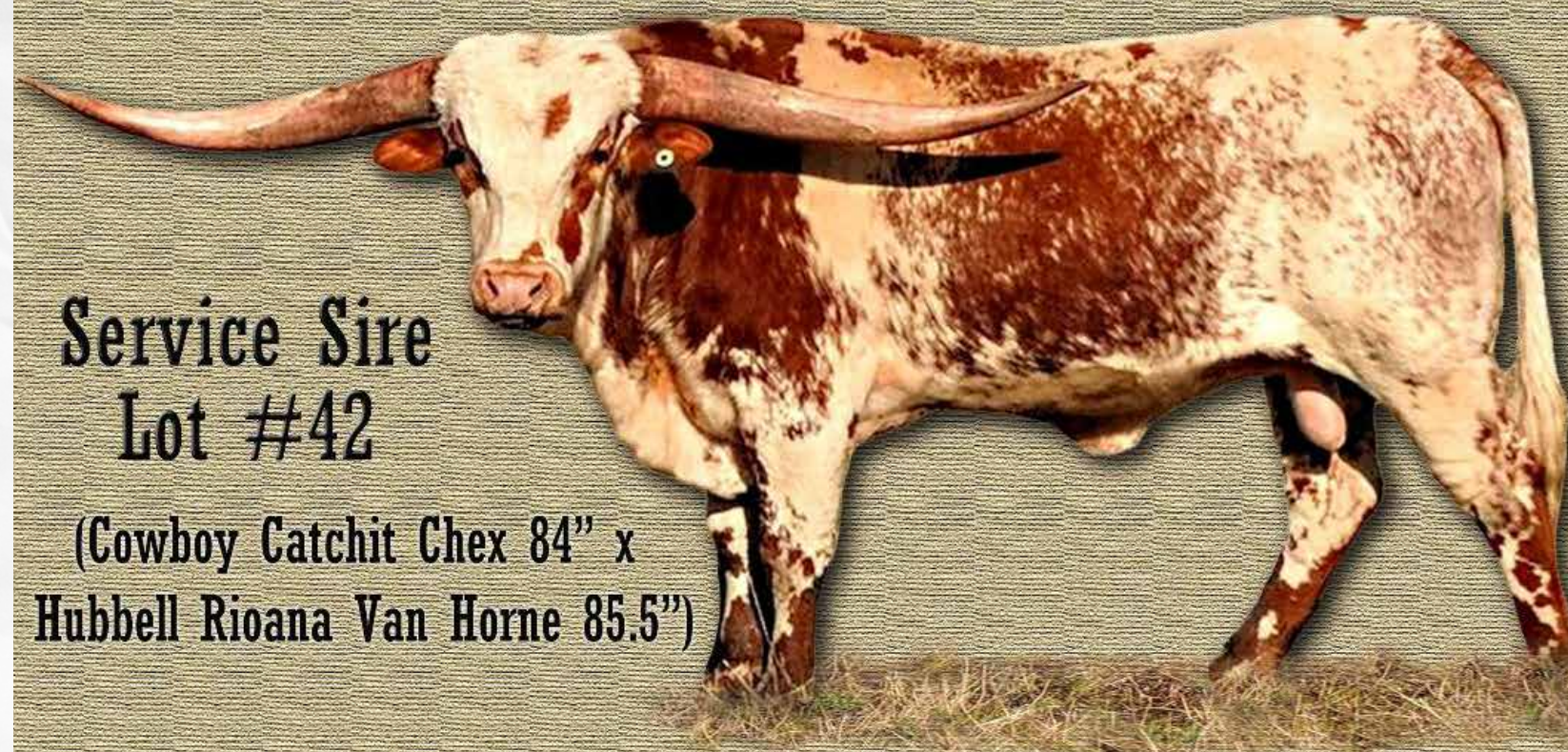
COMMENTS: Honey is a daughter of 90" **Respect Me** out of an HCR daughter. You will love her beautiful and uniquely swept back horn set. She comes to you with a flashy heifer born 5/12/2019 by the great JH Ener-Chi. Honey will be bred to our new herd sire Hubbell's Butch Cassidy, a son of **Cowboy Catchit Chex** and Hubbells Rioana Van Horne, who was over 80" TTT before he turned 3! Find out more at pinebrotherslonghorns.com

SIRE: **RESPECT ME** (HUNTS COMMAND RESPECT X LATTE 34)

DAM: RESPECTED HONEY (HUNTS COMMAND RESPECT X HUNTS MISS DOUBLE SHOT)

Notes

HUBBELLS BUTCH CASSIDY



Service Sire
Lot #42

(Cowboy Catchit Chex 84" x
Hubbell Rioana Van Horne 85.5")

Horn Show Case Semen Special
Conventional ~ \$100

Butch's Cow Power is Ridiculous!

Bl Rio Catchit (97.5") Texana Van Horne (88.25")
LCR Buena Joya (80.875") Starlight (85.875")
Hubbell Rioana Van Horne (85.5")

Coldwater Creek Longhorns and Pine Brothers Longhorns Partnership



Matt & Robyn Brooks (713) 299-8035

Dave Pine (260) 438-5542 - Luke Pine (260) 229-0388

View more @ pinebrotherslonghorns.com



TRAILERS GOING ALL OVER, CATCH A RIDE AT AN EXTREMELY AFFORDABLE RATE

CONTACT:

BEAR DAVIDSON 540-687-0050 BEARDAVIDSON@YMAIL.COM	CHASE VASUT 512-917-8654 CHASEVASUT@YAHOO.COM
--	--

Terms & Conditions

TERMS & CONDITIONS:

All cattle sell under the terms and conditions listed in this catalog.

PAYMENT:

Cash or check at end of sale

LIABILITY:

All persons attending the sale do so at their own risk. The sale host and/or the sale management and/or consignors assume no liability for accidents, theft or damages on the sale facility site.

HEALTH TERMS:

All cattle selling will be accompanied with a valid health certificate to be shipped anywhere in the continental United States.

BIDDING:

Each animal will be sold to the highest bidder with reserve.

BIDDING DISPUTES:

The auctioneer in charge will settle any disputes as to bids, and his decision on such matters shall be final.

TERMS:

Terms of the sale are cash or check to the clerk at the conclusion of the sale. Checks are made payable to the East Coast Longhorn Classic Sale.

POSSESSION:

Immediately after the animal is sold, it will be the sole risk and responsibility of the buyer thereof, but possession cannot be obtained until payment is made.

CERTIFICATION:

A certificate of registration will be furnished and transferred to the purchaser on each lot in the sale, including calves at side.

HEALTH:

Bidders should consider individual state requirements before purchasing.

GUARANTEE:

Breeder guarantees are strictly between the individual consignor and the purchaser at the sale. All calves at side are given to the purchaser free and carry no guarantee.

NOTICE:

The purchaser must look to the seller for fulfillment of all guarantees and representations made hereunder.

PEDIGREES:

The seller has furnished the information on the pedigrees of the animals announced.

ANNOUNCEMENTS:

All announcements from the auctioneer block shall take precedence over information printed in the catalog.

CONTRACT:

The above terms and guarantees shall constitute a contract between the buyer and seller of each animal sold. No cattle may be loaded up until after the sale. All cattle must be out by noon Sunday, Sept. 30, 2018.

BUYER RESPONSIBILITY:

Prospective buyers or bidders at the sale should listen carefully to all announcements made from the auction block by the auctioneer, pedigree reader, or seller on each animal that is sold. Buyers should acquaint themselves with terms concerning the breeder status, fertility, and health papers on each animal sold. It is the responsibility of the buyer to be aware of health regulations for transportation of animals into the state of their residence. By doing so, a buyer can save himself many problems and also enable himself to be more competent and qualified buyer.

Thank You East Coast Longhorn Classic for utilizing Hired Hand Live for your Sale.

For instructions on how to use Hired Hand Live please see the pages in the front of your sale catalog.



HIREDHANDSOFTWARE.COM



BEAR DAVIDSON
3333 Jacks Shop Rd,
Rochelle, VA 22738